

Voice of the Valley

The *Guildford* Globe

July 2011

Issue: 72

www.guildfordglobe.com

Red Moon Over Guildford



Inside:



What's this here pumpkin? P. 4



Why is this woman smiling? P. 9



It's on again? P. 11



Seen in Franklin St. P3

PLUS!

- Hoons going uphill P3
- Weekend folk gathering P9
- Torch Song P8
- Halls for Hire P5

Slowing down P2 **50**

But Wait!!...There's more...

It was a bitterly cold morning in downtown Guildford but the sky was clear and the air was still and the moon did not let us down.

A total lunar eclipse occurs when the moon, earth and sun are completely in line and the moon passes into the earth's shadow. The reason the moon goes red is that the earth's atmosphere scatters the sun's light thus allowing only red photons to pass, before disappearing completely, as it temporarily reverts to being a dark moon.

For those who ventured out of a

warm bed to watch it, you were not disappointed.

The ash from the Puyehue volcano actually added to the visual effect of the eclipse. It took just over 100 minutes for the eclipse to end which makes this one of the longest lunar eclipses July 2000.

If you missed the show you can catch a repeat on 10th December when another eclipse (lasting 51 minutes) will occur at the earlier time of around midnight and thankfully, when the temperature will be much warmer.

Shower block opens with a splash

It was two years in the making but on Thursday 17th June, the shower block on the John Powell Reserve was finally opened. On hand to perform the ceremonial cutting of the ribbon was State Member of Parliament Donna Petrovich, Mayor of Mount Alexander, Janet Cropley and Guildford's Brian Adams who was overseer on the project. In the background is council member John Leatham. *Full Report p 10 Who was John Powell? p 6*



Get your Globe in living colour. Go to www.guildfordglobe.com or email us at guildfordglobe@hotmail.com

From the Editor



Community.

It's an interesting word.

But what is it really?

Existential psychologist, Rollo May, author of the influential tome *Psychology and the Human Dilemma*, described community as being simply a group in which free conversation can take place.

In May's words, "Community is where I can share my innermost thoughts, bring out the depths of my own feelings, and know they will be understood."

Since taking over as editor of *The Globe*, I doubt whether there is been much real understanding as to what is actually going on. I say this because it appears that there are many in this community who are not prepared to share their thoughts, let alone opinions, comments or criticisms.

Except at the Progress meeting, where there were some who expressed a view of what appeared in the last issue of *The Globe*. There was also a reversion to the heresay prin-

ciple that there were "people" in this town who didn't agree with some of the articles.

Let me say this categorically, I make no apologies for what appears in this publication, if you don't express your concerns in writing. The Progress Association is not the forum to discuss issues raised by *The Globe*. All newspapers and publications thrive on having robust letters and opinion pages and *The Globe* is no exception.

"If you do not share your innermost thoughts you will not be understood."

I fully empathise with the former editor who continually asked for contributions and feedback. And yet *The*

Guildford Globe email inbox (as well as our postbox) is bereft of any correspond-

ence.

This is a community newspaper and as such needs community input.

If it's not defamatory or heresay we will publish it.

Keeping it to yourself only hurts the community.

Share your thoughts. Share your opinion. Share your talent.

And, share your feelings.

Be honest.

Love

Rajeev

"For a community to be whole and healthy, it must be based on people's love and concern for each other."

Millard Fuller (1935 – 2009)

50 kph zone petition



A move to introduce a 50 kph zone through Guildford was floated at the June Progress meeting.

At the suggestion of local Member, Maree Edwards, who visited Guildford earlier in the day, it was decided to set up a petition, that, once completed will be presented to VicRoad.

Speeding traffic long been a problem in the town and a reduced speed zone will do much to alleviate this, as exemplified in Chewton, which already has a 50 kph zone in place.

One of the reasons put forward as to why Guildford can't be a 50kph zone is because, the road is a main highway. This argument doesn't hold water when you consider the fact that the same road goes through Daylesford where it becomes a 50kph zone at that point.

The petition is being organised by Megan Carroll.

limestone track
vineyard

Fine wines from the Guildford region.

John & Judy Burford – 48 Limestone Track Guildford 3451

Ph. 03 54764266

www.limestonetrack.com

HOONS RAID LOOKOUT

It seems that the Lookout Road may have been discovered by some hoons seeking a place to hang-out.

A few weeks ago, the locals who live on the road were disturbed by loud cars, loud music and loud voices as a group of ne'er-do-wells tore up the dust to the peak.

And as is typical of these types, they left their rubbish.



This may have been a one-off incident and no reports were made



to police. But next time they will be.

Perhaps it may also be time to consider a rubbish bin at the lookout. Mind you, using a bin is not part

of hoon behaviour.

Footnote: *The Globe* took the rubbish and disposed of it accordingly.

Roadworks finally start at Franklin + Turner Street



The upgrade of the Franklin and Turner Streets crossroads was an agenda item at the last Progress Meeting and it seems they were reading our collective minds.

The machines were out there not a day too soon to seal up the corner.

Driving up Turner and left at Franklin has been somewhat dicey of late and the improvements will be greatly welcomed.

There is no truth in the rumour that the road will be extended all the way up to the Cemetery.

The Shop

As we told you in the last issue of *The Globe* the General Store has been sold.

After being on the market for 15 months the shop was purchased by Trevor Martin and Hilary Lovibond who are expected to take over in mid August. They were unavailable to talk to us for this issue but we will catch up with them for the next, to find out what their plans are.

There's been a lot of General Store stuff around lately with news that the Glenlyon General Store has reopened after a couple of years being abandoned and sadly the Chewton Store and Carlos' Garage next door, were victims of a fire last week. The owners have vowed to reopen as soon as possible.

Thompson family
Funeral Directors

Castlemaine & District Funeral Parlors

03 5472 2202

123 Mostyn Street
Castlemaine, Vic 3450

At Thompson Family Funeral Directors, we pride ourselves on the individual care and attention to every detail. Located in Castlemaine, Victoria, Australia, the Thompson family has four generations of history and has been professionally operated for over 60 years.

Phone 5472 220224 hrs a day-7 days a week

www.thompsonsfunerals.com.au email: peter@thompsonsfunerals.com.au

Market Daze

The Guildford Winter Market had a new lease of life having returned to the Public Hall for the first time in over a year.

Whilst the stall numbers were slightly down, it turned out to be a beautiful sunny day which pulled out the faithful.

Organiser, Diane Waters deemed it a success and planning is under way for the Spring market, to be held on 10th September.



Always the weaver, David Wallace showing he not only cooks an award winning pizza but can also spin a great yarn. Wendy Charles and Daine Waters look on in amusement.



Chris' bread



Wendy's woolies



John Roche seriously considering the merchandise on offer

Social Knitworks are still at it



Beris Perry, Carol Geraghty, Robin Thomas and Doris Glen are in full flight as they are every second Wednesday at the Social Knitworks (formerly Craft) group. Organised by Irene Fitness the group is open to all comers interested in swapping top tips, tall tales and tea. The next group is on 6th July.

Crafty Ladies

Guildford

Hand made gifts, baby clothes and aprons

Telephone 0433 88 55 91

Email: airsmith@optusnet.com.au

The pumpkin has landed



Beth Higgins set up in her usual spot out side and luckily it turned out to be mild, sunny day. She also had a huge orange pumpkin for sale at a mere \$10.



Limestone Track Vineyards' John Burford and Peter Sargeant of The Orchard of St Francis Olives



Sherri McIver was in good spirits checking out David Wallace's wares.



At \$10 Beth's pumpkin was a steal and was eagerly snapped up by John Burford, who was looking forward to turning it into a soup. We await our invitation to partake.

Electrical Contractor

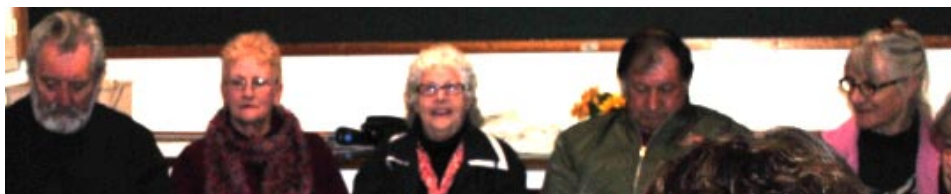
G.T.Edward
R.E.C. No 5711



Contact Greg
Ph: (03) 54734331
Mobile" 0418 252 671

Oh what a lovely meeting

Want
Point of
order



Pontificating: (l-r) Tony Derrett, Maria Derrett, Sandra Major, Victor Rodda and Jill Moon

Indeed it was.

Two of the things that bring a community together is controversy and chaos.

You see the latter happen almost daily as people forge bonds when they are collectively involved in an event such as bushfire, flood, tornado or tsunami. The only way to survive is together.

Controversy can unite a community, such as that which recently surrounded *The Globe*. The usual number of attendees to the monthly Progress meetings has averaged eight or nine and yet the last two have seen over 20 people in attendance. Even Bob Murphy turned up.

The *Globe* transition happened two months ago and yet it



Evaluating: Carol Geraghty (Treasurer) and Deb Dawson (Secretary)



Contemplating: Peter White and Alf Partridge

still dominated proceedings, that and the twenty minute discussion on the minutes of previous meetings.

But if controversy can drag 23 souls out on a bitterly cold Monday night to discuss community issues then bring it on.

Of course other aspects of life in Guildford were explored including the proposed 50 kpm speed limit, the comings and goings at the Lookout and the upcoming Regional Arts initiative *Celebrating Halls*. All are dealt with elsewhere in this issue.

The next meeting is on Monday 4th July, which, for what it's worth, is American Independence Day. Or to paraphrase the Declaration of Independence, "Guildford. Home of the brave, town of the free."

Editorial page 2

Who Was There

Jim Franzi
Deb Dodson
Pam Adams
Rajeev
Carol Geraghty
Peter White
Alf Partridge
David Wallace
John Whiddon
Bob Murphy
Sandra Major
Annie Hardy
Greg Edward
Robyn Massey
Irene Fitness
Andrew Fitness
Robyn Thomas
Jill Moon
Victor Rodda
Megan Carroll
Tony Derrett
Maria Derrett

Every hall is a home



The day when the Guildford Public Hall became a star attraction.

Home is Where the Hall Is, is the name of a grass-roots, community arts initiative that celebrates the role of community halls across Victoria.

This means that things should be rocking at the Public Hall during November and also, quite possibly, the Music Hall.

Whilst nothing is confirmed as yet, it is expected that both our halls in Guildford will be part of the project which has been created by Regional Arts Victoria.

According to a spokesperson for RAV, during the month of November, halls from Mildura to Mallacoota will present a huge range of activities, selected and designed by the local community which will range from bake-offs to dance competitions, photography exhibitions to film nights.

The project was launched by the Victorian Premier Ted Baillieu on Saturday 14 May at the Dunkeld Memorial Hall.

Mr Baillieu said *Home is Where the Hall is* will celebrate the central role that community halls play in communities across the state.

"Community halls are the heart of small communities where townsfolk can meet and celebrate local and personal milestones," Mr Baillieu said.

There are more than 700 community-managed halls in regional Victoria alone, with some dating back to the late 19th century.

For more information go to www.rav.net.au

To suggest ideas get in touch with the hall committee Greg Edwards on 54734331 or Melissa Conn on 5473 4061.



**Guildford
Primary
School**

**Enquiries for new
enrolments welcome!**

Tel 54734241

or email:

guildford.ps@edumail.vic.gov.au

Guildford Post Office

**Pay Bills and do banking
here in Guildford!**

Also

Guildford Fishing & Camping

**Open 9am-5pm Weekdays
9am-12 noon Saturday**

Circus Kids to perform 30 June

To culminate Kirsten Pender's time as an Artist in School with Guildford Primary School there will be a celebration of what the students have achieved this term. They will be presenting a more detailed story based performance at the end of year concert. The students will be showing off their talents for the community on Thursday the 30th of June at 7.00 pm. Early arrivals will enjoy a special performance outside the Public hall.

Who was John Powell?

John (Jack) Powell was born on 24th February 1889, the seventh child and fourth son of William and Janet (nee Rees) Powell in the small mining town of Arberville in South Wales, a few kilometres north of Newport in the Rhondda Valley.

From a young age he worked with his father and brothers in the Rosehayworth coal mine. On 15th November, 1909, when he was 20 years old, he left Wales with his older brother Tom, on the S.S. Afric to come to Australia. They landed at Hobson's Bay (Melbourne) in Victoria where their uncles, John and Richard Rees had farms at Mount Franklin and also Mathoura in NSW. The two brothers initially worked on these farms and also on a farm in Gippsland, all of this being a huge change from their homeland.

After the deaths of their uncles in 1913 and 1914 respectively, Tom took over the management of the Mount Franklin farm and Jack went to Mathoura. Their brother, David, joined them in 1914 and their father William and younger brothers Richard and Rees in 1916.

In 1918, Jack married Mary Jane (Janey) Wright (1887-1958) the eighth child and fifth daughter of Reuben and Jessie (nee Kennedy) Wright of "Boughyards" Strangways/Guildford. They first lived at Mathoura but came back to Guildford around 1924 when Jack leased part of "Boughyards" and helped manage the rest. He was to spend the rest of his life

there. Jack and Janey had one daughter, Olwen, who later married Frank Harris and two grandchildren, Margaret and Ray. Jack returned to Wales several times.

Jack had many interests especially when it came to sport, the main one being cricket. He played for local teams at Shepherd's Flat,

Shire of Newstead and remained there for many years becoming Shire President more than once. He was also a Justice of the Peace.

Being a Welshman Jack had beautiful baritone singing voice and he often graced social gatherings in Guildford with a stirring rendition of *Land of My Fathers* among others.

As a lay preacher he was very much involved in the Sunday school organising picnics and anniversaries. He also trained the children in singing at Sunday school events.

He was the go-to man when it came to being master of ceremonies and he officiated many an event in the town from weddings to funerals.

Guildford was switched on to electricity in 1953 only after intense lobbying by Jack.

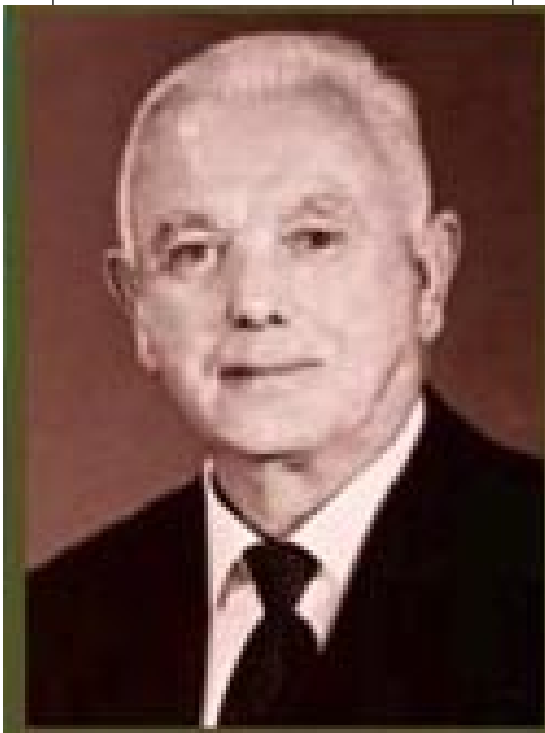
The Reserve was only a paddock with many hillocks and undulations until Jack came along with a vision and determination to turn it into the oval it is today.

He was awarded an MBE for his long service to the community.

Jack Powell died on 9th January, 1973 aged 84 and is buried in Guildford Cemetery.

He was much loved and respected by the Guildford community and the opening of the new shower block is testament to his legacy.

Janet MacDonald with additional input by Sandra Major



Mathoura and Guildford. He became involved in the Castlemaine Cricket Association and was manager of the 1956 Premiership Country Week team. The present "A" Premiership Shield in Castlemaine is named after him as is the reserve in Guildford.

Jack became a councillor on the

Guildford Hot Oil Massage

Full Body Relaxation or
Therapeutic Massage,

Special rate for locals

54734124

Bed and Breakfast and Self Contained Cottage

Chris & Terese Limm
16 Franzi Street,
Guildford, Victoria, 3451
Ph. 03 54734180
celestinehouse@centralvictoria.net

Maree Edwards

State MP for
Bendigo West,
including Guildford



Electorate Office
Ph 5444 4125
maree.edwards@parliament.vic.gov.au



The picture above, overlooking Guildford and what was to become the John Powell Reserve was painted on tin in 1888 by Wearn Dunstan (1841-1893). The original hangs in the meeting room at the Public Hall. A special plaque featuring this painting has been installed on the corner of the Reserve opposite the General Store. The same view taken a few weeks ago from approximately the same spot as Dunstan some 123 years later.



Many thanks to Ida and Bob Aughton for their verandah.

Torch Song

BY JACKIE GOLDBERG

Tonight it was my lights went out,
In darkness black and thick,
I felt round for the matches,
To light my candle's wick.

But alas, I could not find them,
As I groped the table top,
Then I leant too far and fell,
Kicked the bucket and the mop.

A clash was heard, a great loud clang,
Resounded through the kitchen,
My head it hurt, from the painful fall,
As I clambered up a bitchin'.

What caused this fail, of lights and power?
I muttered under breath,
Another bloody blackout,
That's scared me half to death?

It was freezing cold and raining out,
I'd have rathered stay within,
But I'd need to start the generator,
With its million decibel din.

Now I could not light the candle,
And my torch could not be reached,
I turned my eyes to heaven,
"Oh help me," I beseeched.

When all of a sudden, a glowing light,
Appeared before mine eyes,
With wings aflame and golden shield,
An angel of great size.

"Good gracious me", I gasped in awe,
"What brings you here tonight?
Oh could it be" I said to him,
"You've heard me in my plight?"

"Indeed good child" he spoke with grace,
"For you are no heretic,
I'm here to help you find your way,
You looked so damn pathetic."

Come follow me out to the shed,
We'll get the power back,
Let's change those lights from red to green,
Turn the ledger- red to black.

So after his angelic steps,
I timidly walked in slippers,
The ground was sopping wet with rain,
I'd have been better shod in flippers.



torch song- A popular song concerned with unhappiness or failure in love, usually sung by a woman.

But on we went, my face ablush,
With shame o'er what I wore,
In makeup smudged and old pink robe,
I looked a weathered whore.

I saw we'd almost reached the shed,
The generator's home,
Guarded only by some diesel fumes,
And a stone faced, concrete gnome.

With one step more he turned to me,
My nocturnal, seraphic guide,
Just like a gentleman with wings,
He bade me go inside.

With hand a tremble, I flicked a switch,
Pushed the button that turned things on,
The generator brought to life,
Commenced its raucous song.

No sooner had the roar begun,
Than a glow it emanated,
My off-grid, eco-friendly home's,
Electricity thirst being sated.

I guessed at once, the angel's job,
Was now near at its end,
He'd restored to me, to a great degree,
What solar panels at night, can't mend.

With voice so gentle, warm and deep
But with gravitas on his face,
He considered me benevolently,
And then looked around the place.

"Before I go" he slowly said,
"Indulge me please I prithee,
What was the vital task at hand,
For which you needed me?"

Had you been dealt profound insight,
That had to be recorded?
Had you just written a song sublime,
For which you'll be known and lauded?

Perhaps you'd finally found a cure,
For the ills that plague mankind,
Or maybe yet, a world peace plan,
Was going through your mind.

For though angelic is my role,
I am curious it is clear,
About your all important task,
That required me to be here.

Oh dear, oh no, what could I say?
I knew I should not lie.
But I had no sacred tale to tell,
This holy plum-ed guy.

Oh honesty I knew was right,
Had to get this off my chest,
Despite what he might think of me,
To tell the truth was best.

My eyes down cast, I shuffled my feet,
My face now of ashen hue,
Forgive me good angelic one,
I was busting to go to the loo.

Folk Club's Long Weekend of Music

Music lovers and folk musicians and singers came from far and wide to enjoy the Guildford Folk Club's annual Queen's Birthday Weekend "Bash".



Susan



David



Chris

The Folk Club has been running in the Guildford Hotel on the third Wednesday of each month for around twenty years. Many original participants had friends in the Melbourne folk scene, so the idea of a get-together and musical exchange was born. Both the Club and the weekend gathering have seen changes over the years, though many early attendees are still involved.

A Friday night informal gathering at our house started the



weekend in fine style. On Saturday afternoon some of the locals and visitors joined in the festivities for Fiona's birthday in the Music Hall, then it was scrumptious food and multiple jam sessions at the Pub! Many then found themselves back at our place again to see the dawn in yarning and singing by the fire

Judy and Mark and Judy's children hosted the Sunday BBQ – once again well attended. Thanks guys! Mark, you are truly King of the BBQ! The food, the fires, the atmosphere, the songs, the music, the laughter – we all considered ourselves very fortunate to have become involved with this wonderful "folk family community".

Guildford is a very inclusive community, and even if you do not play or sing or recite poems, you are most welcome to come along as a listener to the Folk Club on the third Wednesday of



Struttin' their stuff at the Long Weekend Folk Gathering are from top left: Mhairi and Tony; Jill and the fab foursome John, Jess, Mick and Tess the month at the Guildford Pub. The next one will be on July 20th.

If you wish to be on my email list for regular updates concerning local music-related events, you are welcome to email me at jfgfok@gmail.com. Please also let me know if you have events which you would like to be listed.

Jeanette Gillespie

Morning tea with Maree attracts a "crowd"



It's not often that our local member of Parliament comes to town and when she's shouting morning tea, you would think that would be enough incentive to summon up a crowd.

Well if three's a crowd, that was it.

That's right, except for Brian Adams, Sandra Major and *The Globe*, Guildford gave Maree Edwards a big miss. Despite the table loaded with scrumptious cakes

and caffe latte on offer.

Of course Sandra and Brian were the right people to have along as they canvassed a wide range of topics including the 50 kph zone (see page 2), public transport and the railway line



All mod cons at the JP Reserve

It was a significant day for Guildford with the opening of the shower and toilet facility at the John Powell Reserve.

The coordinator of the project, Brian Adams pointed out it was the middle of February 2009 when then Member for Bendigo West and Minister for Police and Emergency Services and Minister for Corrections, Bob Cameron announcing the funding go-ahead for the project.

Now some two and a half years later it has finally come to fruition. It was also significant that his successor in the seat Maree Edwards was also on hand at the opening. As well as our local Member of Council Michael Redden.

Mayor of Mt Alexander, Janet Cropley, praised what was a great community initiative and the work and the contributors to the project. She also cited architect Daydd Kelly.

Further emphasising the significance of the project, State Member for the Northern Victoria Region, Donna Petrovic, reiterated the mayor's remarks saying that the shower block was an example of what communities can do if they put their minds to it.



Mayor Janet Cropley



Brian Adams



MP Donna Petrovich



Dignitaries: (from left) Councilman Michael Redden, Mayor Cropley, Greg Edwards (obscured) MP Petrovich, Member for Bendigo Maree Edwards, Shower Block architect Daydd Kelly and Brian Adams.

Brian Adams reminded the gathering that Guildford now had a brand new facility which will benefit the town for many years to come.

"We can now properly look after existing event customers and hopefully attract more to the reserve," he said, "and our cricketers and the Engine Club will also benefit not only from the new structure but from work on the oval as well."

Brian praised Daydd Kelly for the wonderful job with the architectural drawings, as well as Greg Edwards who donated the electrical work on the building. Thanks also went to Mellissa Conn who initiated the project, as well as Pam Adams and Ida and Bob Aughton also pitched in along the way.

Brian offered thanks on behalf of the people of Guildford to the State of Victoria for providing the lion's share of the funding, to the Shire of Mount Alexander also for significant funding as many local organizations and businesses for their financial and in-kind contributions. Also the CFA, the Cricket and Engine Clubs deserve special mention for their in-kind efforts. Finally, he thanked Kiera Staley from

Continued page 11



Eighth Banjo Fest tunes up for September



Pictures from last year's Jamboree

The Eighth Guildford Banjo Jamboree is definitely up and running for 2011 and we invite you all to put the dates firmly in the diary right now!

It will be held on the weekend of 16th to 18th September.

I am sure that this year's Jamboree will be as enjoyable as the last seven, with loads of talented artists in concerts and workshops, and with many jam sessions going night and day. Old favourites such as the dance, the Gospel Singalong, the Big Photo and the Robbie Watts Pick-Off will continue and we may be able to announce a new player award soon.

We acknowledge with sadness and love the huge hole left by one of the Jamboree's key founders, Ron De Graauw, who passed away in January this year. The Friday night program at this year's Jamboree will be dedicated to Ron.

Last year's completely raw committee members (Annie Wiltshire, Jeanette Gillespie and Ray Pattle) have offered to give it another run, and we have collected Gayle Boyle along the way – thanks Gayle. We still call for help and advice from those who have so tirelessly been involved in running the Jambo in the past – and will continue to do so!

All sorts of planning and negotiations are well under way and the web site is gradually being updated as information comes to hand. Thanks to Chris Allan for maintaining the website at reasonable cost.

I believe the new shower block on the John Powell Reserve passed its trial at the Vintage Engine rally, and will certainly be in usage at the Jamboree. Thanks to the JPR Committee for pursuing its completion. Let's cross our fingers that another deluge does not prevent full usage of the oval this year!

The Public Hall has seen some improvements too. The Jamboree donated funds towards the installation of sound insulation, and a grant has enabled the installation of picture rails which will make decoration of the hall so much easier.

Please let us know if you are able to help us out in these planning and organising stages. Thanks to those who have already offered some help – we will be in touch. We'd love to have as much person-power as possible! Closer to the time we will be calling for volunteers to assist during, before and after the weekend itself.

Our contact details are:

Email: info@banjojamboree.org

Phone: 5473 4201

Website: www.banjojamboree.org

*Annie Wiltshire, Jeanette Gillespie,
Ray Pattle and Gayle Boyle*

All mod cons

From page 10

the Shire of Mount Alexander for her "outstanding efforts in getting this project finished".

The ribbon, which was black and red (no coincidence that Brian is an Essendon man) was cut by Donna and the Shower Block was declared "open for business"

We're not sure who had the first shower, but we'll keep you posted.

Major Contributors to the Shower Block

Regional Development Victoria	\$118,450.00
Shire of Mount Alexander	\$67,750.00
Guildford Community	\$18,500.00

**Making sure
you're roadworthy.**

**ADEPT
WINDSCREEN REPAIRS**

P: (03) 5476 4312 M: 0412 809 675

F: (03) 5476 4312 E: ericward55@bigpond.com



Food + Entertainment

Guildford Family Hotel
Folk Club 20th July
Wednesdays weekly
Pizza Night
Thursdays
Curry night
www.guildfordfamilyhotel.com.au

Special Events

CFA Trivia Night Saturday 25th June, 8.00pm
Music Hall \$00 per head. Call Ida 5473 4033 or Annie 54734247
Saddle Club Gymkhana
Sun 26th June \$3 entry
Fran 5476 4477 or Jana 0421 889968

Circus Performance
Night In the Hall 30th June

8th Annual Banjo
Jamboree
16-18 September

Organisation Meetings

Progress Association
Meeting. Monday 4th July
Progress Association
Meeting. Public hall.
All welcome 7.00 pm

Guildford Hall
Committee Tuesday 2nd
August; 4th October
7.00pm

John Powell Reserve
Committee of Management
Monday 11th July
Annual General Meeting,
At Reserve Meeting Room.
7.00pm. All invited

Classes

Tai Chi Tuesdays in
the Hall 3.00pm

To have your event, class or
meeting listed here email us at
guildfordglobe@hotmail.com

Groups

Singing Group
12th & 26th July 1.45-
3.00 Tea Rooms rear
General Store

Social Knitworks
(Craft Group)
6th & 20th July At the
Hall.

Playgroup for 0-6 year
olds at Guildford Pri-
mary School. Wednesdays
During term 9.00-11.00 am

FREE CLASSIFIEDS

Got something to sell; Want to Buy;
Offering a service; Having a garage
sale. List it in the Globe's new classi-
fied column. Call or email your listing,
it's free. Max 15 words.

The *Guildford Globe*

Published by: Guildford
Progress Association Inc.

Editor: Rajeev (Ian Oshlack)

Ph: 54734124

Mob: 0419991140

Email: guildfordglobe@hotmail.com

Advertising: Brian Adams

Ph: 54734084

Post: Box 952, Guildford, 3451



Is the bus leaving town?



Brian & Mandy Jean • 6720 Midland Highway • Guildford • Victoria 3451
T: 03 5476 4457 • M: 0438 253 506 • www.guildfordvineyard.com.au • Open weekends 12 - 5 pm