

The Guildford Globe

BOCCE

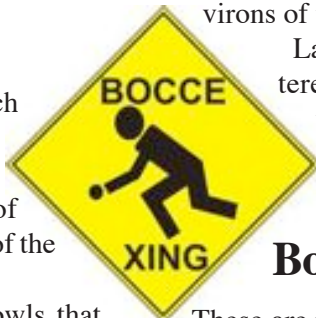
RETURNS TO GUILDFORD

Out with the long tape sizing up the future bocce court in foreground Tony Shea; with Doug Major, Rene Shea, Sandra Major and Peter White.

But don't call it Pétanque

In days gone past, with much of the Guildford community being of Swiss Italian descent, the grand game of *bocce* was played by many of the residents of the town.

Bocce is a game of bowls that hails from things Italian and not to be confused with its cousin *pétanque* which hails from the French (see box).



Well, now moves are afoot to again re-establish a bocce court within the environs of the Big Tree.

Last week saw a group of interested Guildford folk out there at Big Tree Park, measuring tape in hand, sizing up a suitable loca-

tion for a new bocce court.

Whilst an application for a grant via the Maldon District Community Bank was knocked back, it appears likely that a bocce court will be included when the new children's playground is implemented.

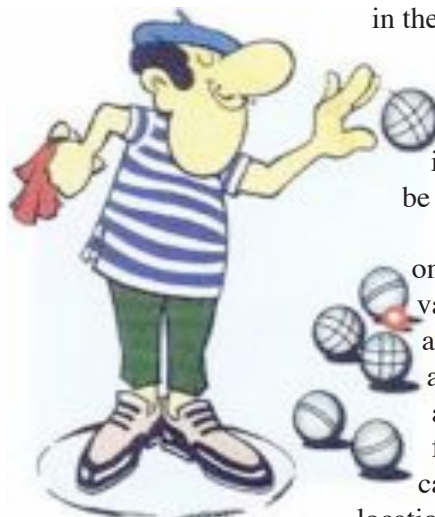
Bocce: A short overview Page 10

Bocce & pétanque: what's the difference?

These are pretty much the same game, just the Italian (*bocce*) and French (*pétanque*) variation. The principal differences are in the number and type of balls used. The rules on setup and scoring are basically identical.

Bocce uses four balls per side and is played by 2 or 4 people. The balls can be plastic, wood, or metal.

Pétanque uses metal balls (*boules*) only and is designed for two teams of various size. In a singles match, 6 *boules* are used, 12 in doublets and triplets. It is also different in that the starting point and target move all around the playing field, with the start of each round located at the previous round's target location.



Inside:

- Council meet P3
- Bus confirmed P5
- Tarilta controversy P7
- A little chicken soup P11
- Globewords returns P15



Greetings

As you've probably gathered by now *The Guildford Globe* is not your usual small town newspaper.

Over the past few issues we seem to have gone out on a limb, highlighting causes and issues that directly affect you, the people of Guildford.

It is also a publication that seeks to entertain and inform.

Over the past year or so the circulation of the *Globe* has grown some 400% to over 600 with readership twice that. We distribute to all the major metro and regional media.

The *Globe* is now distributed beyond Guildford to Campbells Creek, Newstead, Chewton and Castlemaine. We have subscribers all over Victoria via email.

A case in point: our last issue featuring the Truck situation got picked up by a number of major regional papers as well as the ABC.

We also report this month on the return of Bocce to Guildford. The game which hails

from our Swiss Italian heritage was played on a regular basis in time past and plans are afoot to construct a bocce court adjacent to the new playground.

The other big event that happened in Guildford this past month was the Mt Alexander Council came to town. The story is on the opposite page, The strange thing is they wanted everyone to know but on the other hand they didn't, by asking us to refrain from taking any pictures. Luckily that was after we had taken pictures.

This issue is slightly bigger than normal as I will be away during the latter part of July and into August. The next *Globe* will be out in early September.

As always we welcome your feedback.

Enjoy this issue,

Rajeev

17

Number of residents who turned up at the Council meeting in Guildford.

7pm

Time the Post Office will be remain open on Monday nights. This is to allow people working out of town to pick up parcels.

50

Revival of speed limit proposal through Guildford after Betty Buckingham raised concerns about 80 sign on approach to town. (see story page 3)

\$40,000

Amount allocated by Council to rebuild playground in Big Tree Park (see story page 4)

The little apple that could

It's July. The weather has turned decidedly chilly. All the fruit trees are bare, especially apples. But, wait. What's this in Templeton Street? An apple that refuses to budge. The last of the bunch.

All its compatriots either picked or fallen. And yet it hangs on. Either refusing to go or perhaps waiting for summer when a new batch of apples will emerge. An apple good enough to eat.



Guildford
VINEYARD & CELLAR

Brian & Mandy Jean • 6720 Midland Highway • Guildford 3451
T: 03 5376 4457 M: 0438 253 506 www.guildfordvineyard.com.au • Open weekends 12 - 5 pm

The night the Council came to town



And what a turnout it was.

Actually, to be honest, there were about 17 punters who braved the chill.

The meeting started with question time of which there were two.

One, from Rainer Beilharz pertaining to the proposed bike/walk path along the disused Newstead to Castlemaine rail track.

It seemed this may yet be another project destined for the too hard basket with mumblings of “feasability”, “viability” and “consultation” summed up by Mayor Cropley as “maybe in a couple of years”. To which Councillor Michael Redden reminded all and sundry that some \$800,000 had been allocated to the project. “This may be so, but first the Department of Transport needs to have input and so on and so

forth,” said Mount Alexander Shire Director of Environment and Infrastructure, Johan Louw. Another case of we’ll believe it when we see it.

Betty Buckingham then rose to her

feet to question why there was an “80” speed zone before the “60” as you come into Guildford. “This was news to the councillors who obviously weren’t paying attention as they drove into town. Notwithstanding, they agreed to make

a representation to Vicroads to have the 80 removed and the speed through Guildford reduced to 50. Nice work Betty.

As there were no more questions the meeting moved onto other matters which in the main had nothing to do with Guildford.

The question of the trucks remained in limbo.



PHILIPSON MASONRY CONSTRUCTIONS

Glenn Philipson • 0407 825 293 • info@philipsonmasonry.com.au



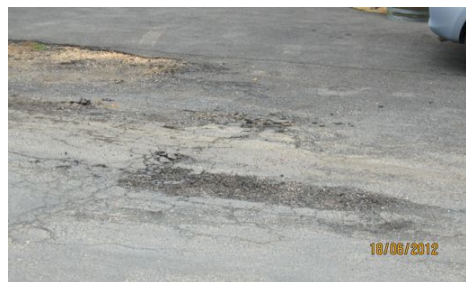
• Stone Work • Brickwork • Paving • Excavations •

Go ahead on hall road repairs

Not only is there a problem with the trucks roaring up and down Fryers Road a secondary problem has occurred when they park in front of the Hall as these pictures demonstrate.

Enter Irene Fitness who confronted Council about the state of the bitumen in front of the main entrance to the Hall and the fact that it had been deteriorating rapidly since the quarry trucks have been parking there on a regular basis.

She asked Council if it were possible to repair the bitumen in front of the Hall and also put up bollards to prevent large vehicles



from causing future damage once it has been repaired.

Well to Irene's and most other people's surprise the Governance coordinator for the Council, Melanie Rogers responded the same day having sent the request to the infrastructure manager, David Ward who informed Irene that a requisition for repair to the infrastructure team as well as a request for bollards to be put in (once the repair has been done). Way to go, Irene.

Playground gets green light



The playground working group from left Amy Johnston, Victor Rodda, Pam Adams, Peter White, Daydd Kelly and Cath Ryan.

The new Guildford playground in Big Tree Park is on the way.

The Mt Alexander Council has allocated \$40,000 to replace the current facility with a new modern state of the art space for kids.

Under the auspices of Council Recreation Officer Amy Johnston, a working group has been convened to put the plan into action.

The idea is to create a play centre that will be unique, functional, safe and above

all fun for local and visiting children.

Plans will be drawn up and an artists concept rendered and put on display in early September to allow for community consultation.

But what was discussed at the initial meeting augers well for an exciting concept.

If you would like to offer input, you can do so by contacting Amy on 5471 1741 or 0409 011 405 or email: a.johnston@mountalexander.vic.gov.au no later than 23rd July.

Wine Bar on a roll

Brian Adams and owner Trevor Martin, seen indulging in a glass of local red at the opening of the new Guildford Wine Bar, situated at the rear of the General Store.

At present, it is only open on Thursdays and Friday from 5.30 - 11.00.

As well as wine, light edibles will also be available.



Locals are enthusiastic about the new addition and and it has already become a regular gathering place.

**RHYS
FORD**
ELECTRICAL

0427 430 830



**SLUDGE BUSTERS
SEPTIC TANK AND
GREASE TRAP
CLEANING**

PH: 5472 3555



Stephen P. Cole

Civil Celebrant

Accredited-Professional-Caring
For all occasions

Mob: 0421 475 943

Email: hotcoles@gcom.net.au

When stop means STOP!!



This is the new STOP sign at the intersection of Franklin and Turner Streets. However, one local resident reports to us that he observed car after car of parents picking their children up from the school driving straight through without so much as a care. May we remind those who transgress, that you are not only breaking the law but putting yours and your children's lives at risk. In the background is the new Franklin St-Turner St sign. Oh...and don't forget to indicate.

Halls Project on again

The Regional Arts Victoria's *Home Is Where the Hall Is* project will be continuing this year, with registrations already open

The project is a grassroots, community arts initiative. Last year over 70 halls from Emu to Mollyulah and including Guildford presented a huge range of activities,

More info at:
www.homeiswherethehallis.com

GRASS SLASHING



Steven Schellekens

SMALL TO LARGE BLOCKS
GUILDFORD AREA

Mobile: 0408 324 491

Home: 5473 4437

email: sdschellekens@bigpond.com



Bus deal signed & sealed

The bus is definitely coming, in one form or another.

This week the agreements are in place, the papers signed and negotiations are underway with Toyota.

There will be two buses, one based in Newstead the other in Baringhup.

A call for volunteer drivers has drawn an overwhelming response from many quarters from people who are not only qualified but eager to pitch in.

According to local councillor Michael Redden the next move will be to work out a plan for how the buses will be utilised.

"We look at the buses as being a part of an overall transport plan for the area," he said, "so, to make the whole thing viable we need to consult with the community as to specific needs."

"I see the buses as being used on a scheduled route basis as well as being available for use by the various community groups on needs basis."

Councillor Redden also suggested

that when a bus was unavailable the introduction of a volunteer program for individuals be available to offer emergency transport when required.

As to what colour the bus will be, you can take your pick, as long as it's white.

However, we like yellow.



Where is global warming when you really need it?

GUILDFORD CEMETERY TRUST

Plot \$190.00

Wall niche \$135.00

Contact Max Kay, Secretary
Phone 5473 4419

Maree Edwards

State MP for
Bendigo West,
including Guildford



Electorate Office
Ph 5444 4125

maree.edwards@parliament.vic.gov.au

Dates set for defibrillator training

The Guildford Hall Committee will be organizing external cardiac defibrillator instruction sessions at the Guildford Public Hall for any member of the Guildford Community who is interested.

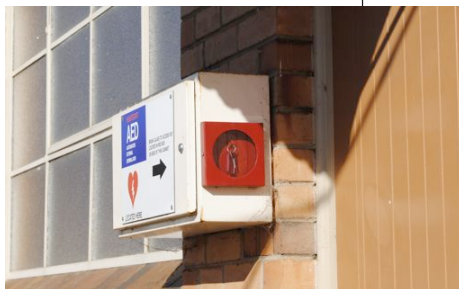
As you may already know the external cardiac defibrillator is housed on the outside of the brick wall on the left of the Hall, next to the side entrance door to the meeting room and is clearly marked.

The instruction sessions will be in groups of ten and will be led by Carol Waddington from CHIRP. The two evening sessions will be on 31st July and the 1st August for those of you who are not available during the day and the daytime sessions are Tuesday the 17th

of July, Wednesday the 18th July and Thursday the 26th July.

If you are interested in participating, call either Irene Fitness on 5473 4292 or Greg Edward on 5473 4331 telling them whether you prefer a day or evening session. If no answer you can leave a message with your details and you will be put on the list.

It should be noted that the Australia and New Zealand Resuscitation Council Guidelines states that no Good Samaritan or volunteer has ever been successfully sued in this country or new Zealand for consequences of rendering assistance to a person in need. A 'Good Samaritan' is defined in legislation as a person acting without expecting financial or other reward for providing assistance. This clarifies the difference between a Good Samaritan and those who work in a professional capacity



Second Wednesday...must be the Knitwits.



One of Guildford's more enduring gatherings is the Craft group aka Social Knitworks aka Social Knetworks aka...the Krochet Kittens or maybe Ladies of the Long Needles?? Whatever, they're still going strong.

limestone track
vineyard

Fine wines from the Guildford region.

John & Judy Burford – 48 Limestone Track Guildford 3451

Ph. 03 54764266

www.limestonetrack.com

Progress meeting nice and cosy



The July meeting of The Guildford Progress Association convened at its new location in Peter White's front room where the ambiance was warm and the catering excellent. It was as usual a free spirited meeting at which the comings and goings of the town were discussed. Only person missing was Sherri McIver, the erstwhile secretary who came down sick on the day. She has since improved and will be back to her duties for August. Mary Soderiou stood in for the night and declared it definitely "a one-off".

Market + Garage Sale

A small but enthusiastic crowd turned up at the June Market with a few new stallholders. At the end of the day most left satisfied.



Convener John Burford was happy with the result. And whilst there are some people who believe that moving the market to a Sunday may help the numbers they are persevering with Saturday, hoping that long term it will prove beneficial.

The next Guildford Market on Saturday 11th August will have an added extra. Terry Douglas is throwing open the doors of the Music Hall for a community Garage Sale.

So now is the time to collect your unused junk and turn it into cash. For more info call Terry at the pub on 5473 4215

If you're after a stall at the market contact John Burford on 5476 4266

The June Market, above, was well attended and with new stallholders



There must be a few turntables in Guildford. Well, we are a group of ancients as this stall the June Market selling vinyl attests. Here Elsie Holland, Sandra Major and Jill Moon check out the possibilities.

SHEL + WAL'S GUILDFORD ACCOMMODATION

Fully self contained B & B.
One bedroom available
behind the post office.

Fri/Sat nights **\$90**

Sun/Thurs **\$75**



Linen & towels
provided.
Cook yourself
breakfast inc.

Call: 5473 4202

Guildford Hot Oil Massage

Full Body Relaxation or
Therapeutic Massage,

Special rate for locals

54734124

Letters

TRUCKS: THE COUNCIL VIEW

Council has obtained substantial State and Federal Government funding to undertake works necessary as a result of severe storm events. These occurred in September 2010, then November 2010 followed by another in January 2011 and again in February this year.

As a result of these flooding events, 770 kilometres of gravel road pavements across the Shire were severely damaged and in some instances whole sections were washed away.

Council's recovery efforts have been to firstly repair some hundreds of damaged culverts and many kilometres of damaged road drains. Regrading and resheeting works are underway.

This requires delivery of material from Council's Guildford gravel pit to various sites right across the municipality. The quarry is located in Tarilta Road and is Council's only gravel pit.

Currently six contractors using up to fifteen crews have been engaged to undertake flood recovery works. The majority of the resheeting works will be continuing over approximately the next 12 weeks, dependent on weather conditions.

We are aware of the impact of the increased use of trucks in the area being felt by the local community of Guildford and surrounds and we have instructed the contractors to ensure that drivers drive sensitively and carefully in the Guildford area.

Council appreciates the community's patience and apologises for the inconvenience. Unfortunately no alternative traffic routes are available.

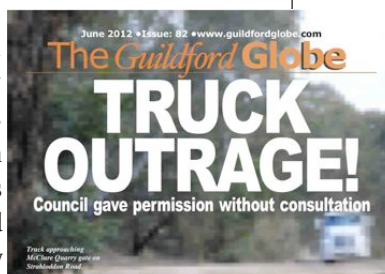
Operations at the Council-owned pit is from approximately 7.30am to 5.30pm Monday to Friday only and VicRoads have been monitoring truck traffic and to this point have found no issues.

There is another gravel quarry nearby on Kemp's Bridge Road in Guildford. This is owned and operated by Bendigo Washed Sands.

Last year at a regular Council Meeting, Council responded to a request for one over dimensional vehicle to be used by Bendigo Washed Sands. It was specified that it will access the quarry about 4-8 times a day. A permit application was assessed on the impact on Council infrastructure and resident amenity. Both of these were deemed minimal.

Council has opportunity to consider applications for use of an over dimensional vehicle in the area but otherwise has no role in controlling private traffic movements.

Johan Louw,
Director of Environment and Infrastructure, Mount Alexander Shire Council.



Inside:

-Guildford Roads P3
-Bus on Horizon P3
-New playground P4
-Shingles revealed P10

BUT WAIT! THERE'S MORE.

Have you noticed that trucks going out the Kemps Bridge road are stopping well back from the Shicers Gully culvert until trucks coming the other way pass? They are unable to see the oncoming trucks when they stop so I presume that they are in radio contact.

I see this occur from my home on the rise to the North on Neill St. What I also see is cars leaving Guildford and overtake the stationary trucks as they have no idea why they have stopped! My concern is that they may not have completed overtaking the stationary trucks when another comes belting around that corner like they do!

Contemplating this danger it occurred to me that the answer

might also serve to relieve Guildford of half the movement of trucks. What if, by agreement between the Council and the quarry operators, or voluntarily on the part of BWS, the trucks entered the quarry via the Yapeen road and left via the Guildford road? Or the other way round, though the way I suggest I think will minimise noise perhaps.

Not a bad compromise I reckon. What do you think?

Bill Sampson

How do I subscribe to this fine newspaper?

David Fitzgerald
*Senior Media Advisor
VicRoads*

fitnfoxy
PERSONAL TRAINING

Monday
6.30pm Boxercise – in Gym
7.15 pm Indoor Spin (bikes) – in Gym

Wednesday
9.15 am Boxercise – Botanical Gardens, C/maine
6.15 pm Spin – in Gym

Thursday 6.15 pm Circuit / upper and lower body – gym. Classes \$13 each.

Personal Training also available by appointment.
Please note no classes during school holidays.

Contact Sharon for bookings on info 0417 347 372
email: shaz@fitnfoxypersonaltraining.com.au

Guildford Fishing & Camping.

Now @ Guildford Post Office
Trading hours: 9-5 weekdays
9.30-12 Saturday

Victorian and NSW
Fishing Licenses available.

BAIT

Deborah Lea CAKES

Unique special occasion cakes designed to your needs and delivered to you freshly baked. Everyday Cakes and Catering for many occasions are also available on request.

Tel: 5473 4172
Mobile: 0403 551 099

info@deborahleacakes.com.au
www.deborahleacakes.com.au

History in the making

There has been much speculation as to the current situation with respect to the historical records and artifacts of Guildford.

Responding to a request by the Progress Association, the chief curator of Guildford's historical collection Ray Pattle offered an update.

The Guildford Public Hall currently houses a collection of photographs, documents and three dimensional objects, much of which relates to Guildford's early history.

For many years the photographs were on display at the Hall but, as I understand it, removed some time ago for painting of the hall's interior.

The Hall's Committee of Management subsequently made a decision, that in order to protect the photographs, they not be returned to the walls but instead be stored in albums and boxes etc. and held in the Hall's History Collection Room. Details of each photograph (i.e. names on reverse) were to be entered onto the Hall's computer in order to make the images 'searchable' by anybody browsing the collection.

Future displays would be limited to facsimile copies of photographs most likely based on a theme such as Anzac Day, Industries and School etc.

Having been requested to assist with the archiving of the collection, it was pleasing to be able to report at the recent Hall Committee Management Meeting, that the archiving of photographs can now be considered complete.

In summation, some 1200 files have been created on the computer, of which some are for the three dimensional objects, some for documents, some for electronic images held on CD, and approximately 720

Winter @ The Saddle Club

The Annual Winter Woollies Gymkhana was held on 24th June to brighten up the cold spell for horse lovers.

The Guildford Saddle Club reserve came alive with well groomed horses and riders, sparkling in cute costumes along with the barbeque food and lots of prizes. Many thanks to Irene Fitness who volunteered her expertise to judge on the day, and to all our sponsors as well as the Mount Alexander Shire who helped make the event possible.

A challenging Handy Mount obstacle course was mastered by Annabell Webb and Kalari.

Smartest on Parade was won by



Sir Kyle Leersen. Knight Errant.

being for photographs. Not all of these photographs are early images of Guildford, as many are of the Banjo Jamboree, Vaughanbury & recent floods.

A 'search' for any surname, event or street etc. will reveal how many items answering that description are held within the Collection and in which album or box they may be found.

Whilst the archiving of photographs can be considered complete documents held in two filing cabinets are similarly being reviewed and any names etc. being entered on the computer.

Madison Birchmore, Sarah Nelson, Jana Kuhr and Kelly Barret in their age groups.

The champion ridden mount was Louie ridden by Amy Bachman and reserve champion was Snow View Transit ridden by Sarah Nelson. Champion Novice rider was Iona Sweeney and reserve champion was Coco Moysey.

Fancy dress was won by Annabell Webb and Tilly

with Kalari in Arabian costume and Kyle Leersen with Gremlina as a mounted Knight. Marco had the longest tail and was the pony most like his owner Breanna Birchmore. Romeo owned by Samara Basset had the longest mane.

Scooby, owned by Ebony Everington won quietest pony and Nikki, owned by Tikari Nelson was the fattest pony and also champion led pony. Reserve champion was Cello Park Melody owned by Julie Birchmore.



Jana Kuhr

Fran Reed

One of the two drawers have now been completed and is included in the above statistics.

The last drawer should be completed within a month.

Public access to the Collection is now a looming matter for consideration, but for the time being, access can be arranged by telephoning me as follows:

Raymond L.J. Pattle
History Collection at Guildford Public Hall
Tel: 5473 4273

Thompson family
Funeral Directors

Castlemaine & District Funeral Parlors

03 5472 2202

123 Mostyn Street
Castlemaine, Vic 3450

At Thompson Family Funeral Directors, we pride ourselves on the individual care and attention to every detail. Located in Castlemaine, Victoria, Australia, the Thompson family has four generations of history and has been professionally operated for over 60 years.

Phone 5472 2202 - 24 hrs a day-7 days a week

www.thompsonsfunerals.com.au email: peter@thompsonsfunerals.com.au

Bocce: A short overview



Throwing balls toward a target is the oldest game known to mankind. As early as 5000 B.C. the Egyptians played a form of bocce with polished rocks. Graphic representations of figures tossing a ball or polished stone have been recorded as early as 5200 B.C.

While bocce today looks quite different from its early predecessors, the unbroken thread of bocce's lineage is the consistently common objective of trying to come as close to a fixed target as possible. From this early objective, the basic rules of bocce were born. From Egypt the game made its way to Greece around 800 B.C. The Romans learned the game from the Greeks, then introduced it throughout the empire. The Roman influence in bocce is preserved in the game's name; bocce derives from the Vulgate Latin *bottia*, meaning boss.

The early Romans were among the first to play a game resembling what we know as bocce today. In early times they used coconuts brought back from Africa and later used hard olive wood to carve out bocce balls. Beginning with Emperor Augustus, bocce became the sport of statesman and rulers. From the early Greek physician *Ipocrates* to the great Italian Renaissance man *Galileo*, the early participants of bocce have noted that the game's athleticism and spirit of competition rejuvenates the body.

As the game enjoyed rapid growth throughout Europe, being the sport of nobility and peasants alike, it began to threaten the health of nations. The popularity of the game was said to interfere with the security of the state because it took too much time away from archery practice and other military exercises. Consequently, Kings *Carlos IV* and *V* prohibited the playing of bocce, and doctors from the University of Montpellier, France, tried to discredit the claim that playing bocce had great therapeutic effect in curing rheumatism.

In 1576, the Republic of Venice publicly condemned the sport, punishing those who played with fines and imprisonment. And perhaps most grave was the condemnation by the Catholic Church which deterred the laity and officially prohibited clergyman from playing the game by proclaiming bocce a means of gambling.

Contrary to the rest of Europe, the great game of bowls thrived in Great Britain. Such nobility as Queen Elizabeth I and Sir Francis Drake were avid fans. According to legend, Sir Francis Drake refused to set out to defend England against the Spanish Armada until he finished a game. He proclaimed, "First we finish the game, then we'll deal with the Armada!"

The sport first came to America in the English version called *bowls* from the French *boule* meaning ball. In accord with how the game was played in Britain, American players threw the ball not on stone dust (as is done today in bocce) but on close cropped grass which some say is the origin of the modern lawn. It has been noted that one early American playing field was Bowling Green at the southern tip of Manhattan and that George Washington built a court at Mount Vernon in the 1780s.

In modern times, the first bocce clubs were organized in Italy. Notably the first Italian League was formed in 1947 by fifteen teams in and around the town of Rivoli (Torino). 1947 also marks the beginning of the yearly Bocce World Championships.

Thanks to many Italian immigrants at the turn of the century, bocce has come to flourish in the United States. During its beginnings in the U.S. there were as many versions of the game as there were towns the immigrants had left. Bringing some order to the game is the Collegium Cosmicum ad Buxear, the preeminent bocce organization headquartered in Rome, Italy.

It should be added that the oral traditions of bocce are

just as much an important part of the game. Throw out a pallino and become part of the long heritage of the game from great thinkers such as Galileo and da Vinci, to rulers Augustus and Queen Elizabeth, to the noble Sir Francis Drake and even America's own George Washington. Enjoy the world's oldest sport, a sport known to revive the body and mind, and next to soccer, the most popular game in the world.

Practice

The Latin-European Tradition

Italy and France have produced two main games, codified relatively recently, with broad similarities. They began and remain predominantly open-air activities, played on long, rectangular pitches originally improvised from rough village spaces during hot, dry summers. These have surfaces of raked

sand or gravel on which the tossed balls fall and stick, rather than roll. Both games are still often played informally in the village and cafe tradition by men of all ages, but they have now acquired national and international competitive networks and, in many cases, dedicated indoor facilities that allow for year-round play in urban areas.

Bocce uses a "court," "alley," or "rink" approximately 18.3 meters long by 2.4 meters wide (60 feet by 8 feet). Increasingly, facilities usually provide several of these side by side, as do dedicated areas found in many public parks. There are foul areas at each end of the court. The small target ball, the pallino, is then tossed from one end and must land at least 1 1/4 meters (5 feet) beyond center. Each player then aims to throw his bowl, which is heavier than the pallino, as close as possible to the target. This is usually done after a walk-up of several steps within the foul area. The throw is complicated by variations on the way the target is approached, according to regional practices. Competitors comprise two players with two shots each or teams of three to six people using four shots each. If a bowl displaces others already in place it is disqualified. The winner of a game is the first to score 9-15 points in pairs, or 9-18 in a team competition.

Italy stages a number of regional competitions, reinforcing the country's strong regional rivalries. International play is largely limited to Italy and France, which occasionally compete at adult and juvenile levels in grandly titled tournaments. There is a cup provided by the prince of Monaco, whose territory lies between the two main contenders, and the results have long been dominated by Italy. Although it

now has the superstructures of a modern sport, bocce is still largely local and recreational in its appeal. Given its peasant origins, it is hardly surprising that it remains male-dominated, although a small number of women play. Despite its growing complexity, its appeal lies in its being a "sport simpatico e popolare" in the words of a recent enthusiast — something essentially part of an Italian summer.

Rico Daniele & Jeanne Huber

www.bocce.org



A rare shot of bocce being played in or around Guildford from the 1850's.

From the History Collection
© Guildford Public Hall

In the next issue of The Globe we will run an actual history of bocce in Guildford.



Call into our Pumping & Irrigation Superstores for:

- Personalised service – Friendly staff ensure you get exactly what you want
- Latest technology – Leading edge products from the major suppliers
- Professional advice – Highly trained staff to answer all your questions
 - Huge Product range – Over 7,000 product lines
 - Free Design service – Ask in store for details
- Service & repairs – Trained, professional service technicians

Do it yourself or have our experienced installation and service team do it for you

1300 664 670

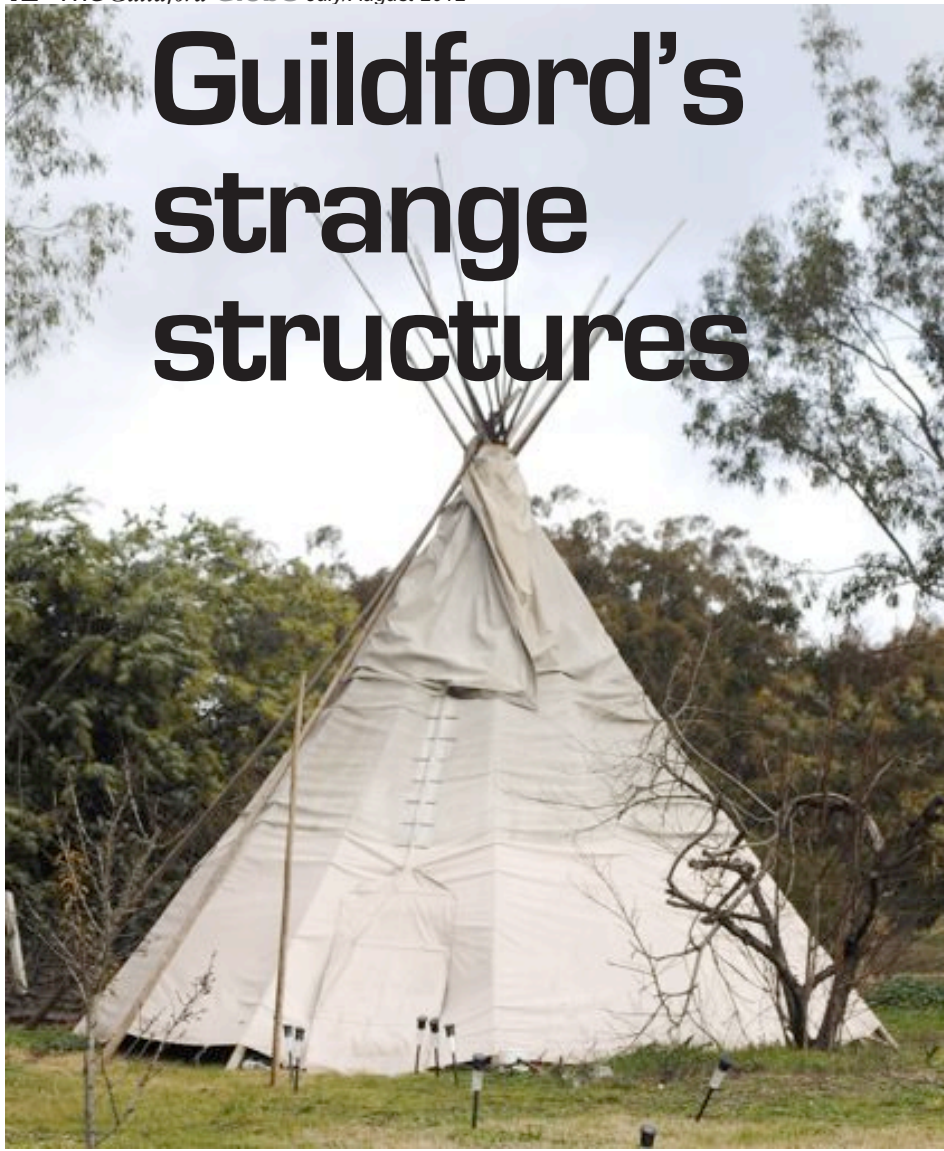
BENDIGO – 84 – 86 Strickland Road 5442 5655

BALLARAT – 1009 Latrobe Street 5336 3600

KYNETON – 55a Edgecombe Rd 5422 0000

www.midlandirrigation.com.au

Guildford's strange structures



When you look underneath it, we are quite a quirky town, full of relatively quirky people.

We are also inhabited by musicians, artists and artisans. Not to mention some pretty good cooks.

But when it comes to quirkiness some of our quirky residents have added some pretty quirky structures that are part of the Guildford streetscapes. Some are old. Some are new. A few we've pictured on this page.

We won't name names but just acknowledge that they live among us.



The world's greatest soup.

Now that Winter has really set in and one's thoughts turn to warming foods we offer herewith a poetic take on the soup that not only will warm your bones but is the only known cure for the common cold. And a plethora of other ailments. Namely chicken soup. Not just any chicken soup but real, down to earth Jewish chicken soup. Take it away Jackie:

Soup du Jour is Soup du Chook!

It's winter and the cold has come,
My nose drips ice, my feet are numb,
I sit upon my frozen bum,
And yearn for sun kissed sands and rum.

Day dreaming won't warm up my bones,
Nor conj'gal rights, when all alone,
My thoughts are drawn to arctic zones,
From swathes of scarves, oh hear me moan.

I need to rid my inner core,
Of hypothermia what's more,
For inspiration I implore,
Oh look! A chook on my fridge floor.

"Hot soup!", the thought lights up my brain,
To stave off cold's arthritic pain,
Best check the recipe again,
Ensure I've things for broth, in main.

Two onions dice, then fry in oil,
Three cloves of garlic, wash of soil,
Add four small carrots, slice by toil,
Yam, chicken, water, bring to boil.

Take salt and pepper, as per taste,
Dill, cel'ry, parsley, do not waste.
Cook 1-2 hours, can't have haste.
On Yiddish lore, this soup is based.

You'll heed my words if you're no dill,
'Cos chook soup making's quite a skill,
That's good to know when someone's ill,
Make one big poulet liquid pill.

Forgive me now I beg of you,
I have to go, this much is true.
My temp's dropped low, I've changed in hue.
So bloody cold, I've turned quite blue!

Jackie Rozenfeld

http://en.wikipedia.org/wiki/Chicken_soup



Crafty Ladies

Guildford

Hand made gifts, baby clothes and aprons

Telephone 0433 88 55 91

Email: airsmith@optusnet.com.au

But...



And now a story about birds

WHEN A SPARROW FALLS.....

Here a female mate is injured and the condition is soon fatal.
She was hit by a car as she swooped low across the road.



He brought her food
again, but was shocked
to find her dead.

Here he brought her food and attended to her with love and compassion.



He tried to
move her ... a
rarely-seen effort
for swallows!



Aware that his sweetheart is dead and
will never come back to him again,
He cries with adoring love.



The photographer sold these pictures for a nominal fee to the most famous newspaper in France. All copies of that edition were sold out on the day these pictures were published.

Given the current controversy over sending cattle to be slaughtered in Indonesia, there are many people who think animals don't have brains or feelings? The pictures on this page refute this assertion. You see here both the expression of love and sorrow.

If there is a moral to be found here it is to live simply, love generously, care deeply and speak kindly.

Grace is God reaching down.

Faith is man reaching back.

The next time you see the birds flying over and around Guildford...be aware that you are not only looking up at them, but they're looking down on you.

He stood beside her, saddened of her death. Finally aware she would never return to him, he stayed beside her body chirping out his sadness and sorrow.



HAY
Irrigated Lucerne
Clover
Rye + Clover
Oaten
Straw

All available in small squares
& net wrap rolls. Delivery available.

0428 594 044

Glen Brothers Pty Ltd

BAKER EARTHMOVING SERVICES

PLANT

•Excavators 5 & 13 tonne •Tip Trucks 6 & 10 metre
•Post Hole Auger •Rock Grab •Roller

SERVICES

•Trenches •Drainage •Foundations •Driveways •Retaining
Walls •Septic •Land Clearing •Erosion Control •Explosives

Call Jai Baker on
0419 364815 or Sharon
Baker on 0417 347372



bakerearthmoving@skymesh.com.au



**Guildford
Primary
School**

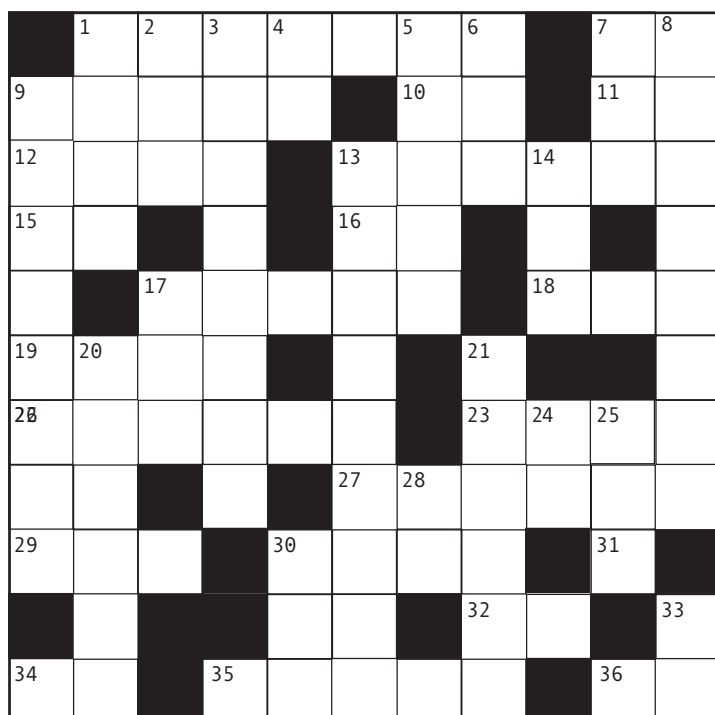
**Enquiries for new
enrolments welcome!**

Tel 54734241

or email:

guildford.ps@edumail.vic.gov.au

GLOBEWORDS



ACROSS

- 1 Guildford Village Market logo (7)
 7 Irene Fitness abbr. (2)
 9. Swallowed by a whale (5)
 10. In the direction of (2)
 11 Little Loddon (2)
 12 Shortly, soon (4)
 13 Sing like a magpie (6)
 15 Maurie Dynon abbr (2)
 16 Evol Lancaster abbr (2)
 17 Unskilled foreign labourer (5)
 18 Guildford Saddle Club abbr (3)
 19 Playing field (4)
 22 The Big ----- (6)
 23 Move very carefully (4)
 26 East Lancefield abbr (2)
 27 Wise, trusted advisor (6)
 29 Slippery fish (3)
 30 Obtain by work or merit (4)
 31 Maldon North abbr (2)
 32 Wether, although (2)
 34 Arsenic (chem) (2)
 35 Vital Guildford Transport Vehicles (5)
 36 Limestone Creek abbr (2)

DOWN

- 1 Small body of still water (4)
2 Card game (3)
3 Stringed musical instrument (8)
4 Measure of acid/alkaline (2)
5 Country used to use lire as
currency (5)
6 And not (3)
7 Not in good health (3)
8 ----- Street (8)
9 Banjo ----- (8)
13 ----- Reef (9)
14 Wet marshy ground (3)
17 Unchivalrous person (3)
20 Personal servants (6)
21 Anyone for ----- (6)
24 Position in time or space (2)
25 The sun (3)
28 Erbium (chem) (2)
30 Flightless bird (3)
33 Darcy Connell abbr (2)

•Some of the clues relate to the June issue of *The Globe* No. 82.

Globewords created by Lisa Sargent

**The Post Office
is now open
until 7.00pm
on Mondays.**

The *Gulfport Globe* July/August 2012 13

Do not stand
at my grave
and weep



I am not there. I do not sleep.

I am a thousand winds that blow.

I am the diamond glints on snow.

I am the sunlight on ripened grain.

I am the gentle autumn rain.

When you awaken in the morning's hush

I am the swift uplifting rush

Of quiet birds in circled flight.

I am the soft stars that shine at night.

Do not stand at my grave and cry;

I am not there. I did not die.

Mary Elizabeth Frye



Food + Entertainment

Guildford Family Hotel
Wed: Pizza Night

Thurs: Curry night
Fri: Dinner Jam Session
Sat: Dinner Live Music
Sun: Lunch with live music
Folk Club Wed 18 Jul 15 Sep
www.guildfordfamilyhotel.com.au

Bus Timetable

| • Mon-Fri | • Saturday |
|---------------|---------------|
| Dep. Guildfd | Dep. Guildfd |
| 06.30 | 9.25 |
| 07.20 | 18.45 |
| 10.25 | Dep. Cas. Stn |
| 15.05 | 10.00 |
| 16.20 | 19.20 |
| Dep. Cas. Stn | • Sunday |
| 07.25 | Dep. Guildfd |
| 13.00 | 18.15 |
| 20.10 | Dep. Cas. Stn |
| | 9.20 |

Note: New Venue for Progress

Organisation Meetings

Progress Association Meeting. Monday 6th Aug, 3rd Sep Peter White's 7 Fletcher St All welcome 7.00 pm
John Powell Reserve Committee of Management AGM Monday 9th July. Pavilion. JP Reserve 7.00pm

Hall Committee Meeting. Tuesday 7th Aug Public hall. All welcome 7.00 pm

Classes

Strength Training Tuesdays and Thursdays in the Hall 1-2.00pm \$5 per session
Tai Chi for Arthritis with Teresa Fridays 10-11 in the Hall Details: 5473 4180

FREE CLASSIFIEDS

MEMORIES TRANSCRIBED

Let me help you record and write your memories, before it's too late.
Contact Gloria: 0409 218 096

Got something to sell; Want to Buy; Having a garage sale. List it in the Globe's classified column. Call or email your listing, it's free. Max 15 words.

Groups

Social Networks (Craft Group)
Wed 18th July 1st, 15th 29th August 10.30am
Sat meeting 7th July, 4th August, 1st Sep 1.00pm
Public Hall

The *Guildford Globe*

Published by: Guildford Progress Association Inc.
Editor: Rajeev (Ian Oshlack)
Ph: 54734124
Mob: 0419991140

Email: guildfordglobe@hotmail.com

Web: www.guildfordglobe.com

Advertising: Brian Adams
Ph: 54734084

Post: Box 952, Guildford, 3451



Welshmans Reef 329 Seers Road
phone/fax 03 5475 1039 | email info@chapplewine.com | www.chapplewine.com
Cellar door open 11am-5pm most days

Meet Arthur Chapple, the winemaker at our estate located 4kms along a country lane, midway between the historic towns of Maldon and Newstead. Our award winning shiraz is available at the cellar door.

Chapple's

Cairn Curran Estate
Award-winning Wine