

# The *Guildford* Globe

•Issue 94 •August 2013  
•www.guildfordglobe.com  
•guildfordglobe@hotmail.com

## National Trust Guided Tour set for September

The Mt Alexander Branch of the National Trust will conduct a guided tour and afternoon tea through Guildford on Sunday September 8th.

Approximately 65 people will be coming to see the historical aspects of this town.

There will be two groups splitting off then coming back to the Guildford Public Hall for afternoon tea.

The afternoon runs from 2.00pm to 5.00pm.

Previous excursions have been to Yepeen, Fryerstown, Yandoit and Welshman's Reef. Especially where there is a bit of history.

Many well know locals have been roped in to offer their input.

## Inside

- Cemetery cleanup p2
- Banjo Jambo p4
- Guildford NSW p6
- Taradales Big Night p10
- and much more....

# Just when you thought it was safe...



Picture: Ida Aughton

Yes folks, it's arrived.  
The NBN tower.

They slipped it in  
when no one was watch-  
ing, or so they thought.

But we were there to  
witness the structure be-  
ing lugged up the hill.

The tower is aimed  
to deliver broadband  
services to Guildford via  
wireless transmission.  
The speed will be at  
around 25mps which is  
said to produce twice the  
speed that is currently  
available.

However, it is sug-  
gested that when a number of people are  
logged on this speed will be greatly re-  
duced.

The towers are in lieu of fibre op-



tic cable that will produce 100mps.

There has been much controversy  
around the health aspects of the towers

*Continued on page 3*





# Greetings

It seems that the Post Office is in a spot of bother.

In a letter sent to the *Globe* Michelle is worried that they may lose their EPOS machine due to a lack of patronage.

This seems high-minded on the part of Australia Post. They want 10,000 transactions a year and given the situation we are nowhere near that.

The fact that internet banking has taken a lot of this away, it is still a bit ridiculous to simply remove the machine given that it took a petition to get it.

There are two points here:

1. We increase our use of the Post Office.

2. Australia Post be persuaded that it is not in their best interests to remove the machine.

Either way, try and use the post office as much as you can...or imagine Guildford without it.

Congratulations this month to Robyn Thomas who secured a Volunteers Grant for \$2780 on behalf of Progress to pay for some needed items.

Due to be bought out of the grant are such things as sail cloth over the BBQ area, a large industrial size Esky and first aid and fire equipment.

The Progress Association is working for you.

In this issue we continue our look at the other Guildford. This month, Guildford in NSW on page six.

We asked the question how did Guildford get its name which raised some speculation.

The booklet 'Guildford' provides an answer as suggested by late Castlemaine

Historian Marge Rilen in which she interprets Guildford as being de-

rived from the term 'Geltford' or toll ford.

In a note from Ray Pattle he has visited the ford at Guildford in Surrey and has seen the explanatory sign located at the ford.

It reads "This bridge stands on the site of the ancient ford from which Guildford takes its name. Saxon migrants founded the town in about 500AD, settling beside the "golden ford"....

In the next issue we will look at Guildford in Surrey

The Banjo Festival is nigh and as usual the organisers are looking for volunteers,

There is a form on page eight, so if you can spare the time it would be appreciated.

And finally, as you will note, it has arrived. I speak of the NBN Tower.

Good or bad, it is something which you ought to ponder.

Enjoy this issue

**Rajeev**

## Cemetery clean up

If you've been up to the cemetery lately you would have noticed the trees and foliage all over the ground in the corner where the old graves are located.

According to Max Kay, Secretary of the Guildford Cemetery Trust the cutting was due to the roots of the trees going under the graves.

"We've burnt off quite a few branches and are expecting to do the rest when the weather dries up," he said.



## Limestone Track

Vineyard

Established 1989

Fine wines from the Guildford region.

John & Judy Burford - 48 Limestone Track  
Guildford 3451

Ph 03 54764266 www.limestonetrack.com



# It's a mess

Continued from page 1

and the harmful effects of radiation. But despite the protests the council voted in favour of the towers which are being installed in Harcourt, Taradale, Newstead and other places throughout the shire.

In Campbells Creek dissent flared around a tower bening erected in proximity to the Steiner School. Apparantly the parents were not informed until after a council decision was made. However there is a rumour that has arisen that the concrete



for the foundation of the tower has been incorrectly poured and that it will have to be dug up.

The area of the Guildford tower which was a few weeks ago pristine land now looks like a building site.



## Market set for September 7th...or is it 14th

The election notwithstanding the next Guildford Market will be on the 7th September. Or it could be the 14th.

At the time of going to press there was confusion as to when and where it was to be held.

The market has the hall booked on

the 7th and the electoral commission could end up at the School.

If you would like a stall call John or Judy Burford on 54764266.

The market has slowly been gathering steam and, whenever it is, this one is expected to be a really good one.

## Intersection to be repaired

The cracked road outside the Public Hall on the corner of Fryers Road and the Midland Highway will be fixed according to VicRoads

Mal Kersting, VicRoads Regional Director, said he was aware of the road surface deterioration at the intersection of the Midland Hwy and Kemps Bridge Road (also locally known as Fryers Road).

"The area of deterioration is the joint responsibility of VicRoads and Mt Alexander Shire. "He explained, "both organisations are currently working together to develop a repair program for the site.

This program is currently being finalised and repair works are expected to commence over the warmer months, when conditions are better suited for this type of work."

He also mentioned that VicRoads reminds heavy vehicle operators that Fryers Road is a local road under the management of the Shire of Mount Alexander. This road is not approved for use by B-Double trucks.

Residents who witness B-Doubles using Fryers Road are encouraged to contact the Shire or record the vehicle's number plates or the trucking company's details and contact VicRoads' Transport Safety Services on 5434 5000.

# PHILIPSON MASONRY CONSTRUCTIONS

Glenn Philipson • 0407 825 293 • [info@philipsonmasonry.com.au](mailto:info@philipsonmasonry.com.au)



• Stone Work • Brickwork • Paving • Excavations •

# Banjo Jambo plucks up 10 years

The Tenth Anniversary Guildford Banjo Jamboree is scheduled to be held on 20th-22nd September.

It is intended that this year's Jamboree will be as enjoyable as the last nine, with a plethora of artists appearing in concerts, workshops and jam ses-

sign from Irene Fitness which celebrates the tenth anniversary.

Of course the Jamboree could not possibly happen in our little village without the generosity of the performers, MCs, dance musos and callers, sound crew, local businesses and organisations,

local groups who give time, facilities, energy and skills to help the weekend to succeed.

As mentioned in the last Globe, we will be losing some key committee members after this Jamboree. Annie Wiltshire (Security and Financial Management) and Gayle Boyle (Merchandise Co-ordinator) will both be taking a well-earned rest, and I would like to start handing over my roles of Chairperson and Programmer. We'd love to hear from anyone who may be interested in filling any of those roles. Training will be given in all roles.



sions going night and day. The Jamboree aims to be a friendly, enjoyable and informative gathering of musicians and music lovers and we trust that all readers who are attending will stand by that ethos and ensure that everyone has a wonderful weekend.

All your old favourites will be featured, such as the Saturday and Sunday afternoon concerts, the four chalkboard concerts, the open-age and youth "Banjo Pick-Off" awards, the Saturday lunchtime Big Tree Procession and Photo, the Maree Murrell Memorial Saturdee Night Dance, the Sunday morning Gospel Singalong, the Instrument Makers Display at London House and Glen Bale's Big Banjo. Look out for our special anniversary logo this year, a lino-cut de-

committee of volunteers, and you, the volunteers who come to the party and offer some time to sit on doors or sell tickets or merchandise, or help with the 1001 other tasks necessary for the Jamboree to function. Please peruse the Volunteer Interest Form in this newsletter to see whether you could give three hours or more of time for a weekend pass, or just donate an hour or two through the weekend. Forms can be returned in a number of ways – refer to the top of the form.

Ticket prices will be mostly the same as last year. The full weekend ticket is only \$35. Other ticket prices will soon be on our website. Monies received go towards the running costs of the Jamboree, and towards donations to various

Jeanette Gillespie (Chairperson)

Email: [info@banjojamboree.org](mailto:info@banjojamboree.org)

Volunteers: [banjovolunteer@jeanettegillespie.com](mailto:banjovolunteer@jeanettegillespie.com)

@gmail.com

Website: [www.banjojamboree.org](http://www.banjojamboree.org)

## John Powell looking for new secretary

The John Powell Reserve Committee is looking for a new honorary secretary. The successful candidate will be filling a committee vacancy.

If you're interested contact Brian Adams 5473 4084.

**RHYS  
FORD  
ELECTRICAL**

**0427 430 830**

**GRASS  
SLASHING**



**Steven Schellekens**  
SMALL TO LARGE BLOCKS  
GUILDFORD AREA

Mobile: 0408 324 491  
Home: 5473 4437  
email: [sdschellekens@bigpond.com](mailto:sdschellekens@bigpond.com)



**SLUDGE BUSTERS  
SEPTIC TANK AND  
GREASE TRAP  
CLEANING**

**PH: 5472 3555**



# Saturday arvo in Guildford



They came from near and far to the Saturday meeting at the Music Hall.

What it was about was the proliferation of electronic devices in our society, mainly the smart meters. Judging by the crowd there is quite a lot of interest around the devices and how they may be affecting your health,

## Singer celebrates history

I see Tony's twin brother Chris on page three of the July Globe.

Tony entered the 2010 Monster Meeting Song Award with an artistic interpretation of the Monster Meeting. The Song Award was conceived as a unique way of garnering interest in the pre-cursor to Eureka – The Great Meeting of Diggers saw some 15,000 miners gather at the Shepherd's Hut on Forest Creek on 15th December, 1851.

Tony's song *The Quartz and the Clay* wasn't shortlisted for the Award, but was selected to be part of the Monster Meeting story told in songs. As such, it is part of the Monster Meeting

double CD pack that is available for sale in the Castlemaine and Chewton areas, as well as on line.

*The Australian* reviewed the double CD pack in April, and singled out Tony for being able to work the word pusillanimity into his song!



The Red Ribbon Rebellion (Bendigo) which followed the MM on 27th August 1853 (also before Eureka)

is being celebrated on its 160th anniversary at 10.00am at Rosalind Park, Bendigo on the 27th August 2013. It will be a worthwhile event.

John Ellis  
Chewton Cha

## Beware of the dog

Last Monday morning 29th July at 7.30 am Tony Derrett was walking his dog Honey as he does each morning down to the shop for a paper.

As they were crossing from the pub to the store a staffy dog came from the direction of the Fire Shed and attacked Honey who

was minding her own business and had her lead on.

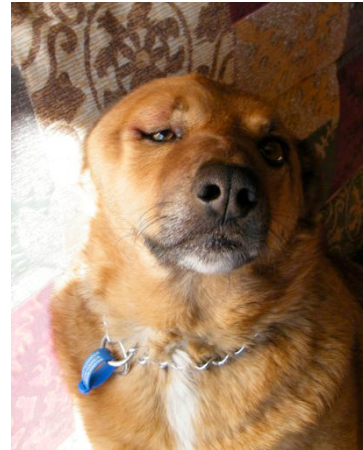
Honey has a deep wound to the top of her head which became infected and needed anti-

biotics. We have reported the incident to police and the ranger. It is believed this dog has a record and has attacked before.

It could have been a child or grandchild walking their pet, so we are warning residents that there is a very unhappy staffy wondering the streets of CBD Guildford.

The Jamboree is coming up next month and we are expecting quite a few visiting dogs.

As a light note to all this Honey despite her pain managed to give her vet a kiss and shook hands with her...before receiving an account for \$130.



**BAKER EARTHMOVING SERVICES**

**PLANT**  
•Excavators 5 & 13 tonne •Tip Trucks 6 & 10 metre  
•Post Hole Auger •Rock Grab •Roller

**SERVICES**  
•Trenches •Drainage •Foundations •Driveways •Retaining Walls •Septic •Land Clearing •Erosion Control •Explosives

Call Jai Baker on  
0419 364815 or Sharon  
Baker on 0417 347372

[bakerearthmoving@skymesh.com.au](mailto:bakerearthmoving@skymesh.com.au)

**Peter MacDonald**  
ABN: 82746420702

**LIGHT ENGINE & PUMP REPAIRS**

**Motorcycles, Mowers & Marine Repairs**  
**Pump - On site Repair & Sales**  
**House Bore-Dam-Farm**

**Phone: 0417 487 378**

**38A Panmure Street, Newstead, Vic., 3462**



**Guildford Primary School**

**Enquiries for new enrolments welcome!**

Tel 54734241  
or email:  
[guildford.ps@edumail.vic.gov.au](mailto:guildford.ps@edumail.vic.gov.au)

# Guildford NSW

## Guildford is a suburb of Sydney,

in the state of New South Wales, located 25 kilometres west of the Sydney's central business district and is part of the Greater Western Sydney region.

Prior to colonisation, the Dharug people lived in small

1837 and named his property Guildford, as he had ties with the Earl of Guildford. Although the name of the property changed to Orchardleigh in 1843 when it was eventually sold by North. The name Guildford stuck to the region and the small hamlet which was developed in the area around Woodville Road. In 1869 a school had opened and a church was constructed in the 1880s.]

In 1876, a railway station was built on the line some distance to the north of the village and named Guildford because it was the closest settlement to the station. The settlement that grew up around the railway station became larger

than the original village and ultimately took over the name Guildford with the former settlement becoming known as Old Guildford.

Guildford is home to historic house Linnwood which is listed as a building of state significance on the New South Wales Heritage Office State Heritage Register.

Linnwood Hall was the Home of George McCredie until his death in 1903. He was a



*A Guildford town convention taken in August 1907*

groups across the Cumberland Plain, including in the area which is now the Woodville Ward. The Bidjigal clan also lived around the area which is now Guildford.

Lieutenant Samuel North was granted 640 acres here in

prominent business man and Member of Parliament and was Mayor of Municipality of Prospect and Sherwood from 1892-1895.

The park complex consists of the local Swimming Cen-



**Stephen P. Cole**

*Civil Celebrant*

Accredited-Professional-Caring  
For all occasions

Mob: 0421 475 943

Email: hotcoles@gcom.net.au

## Crafty Ladies Guildford



**Hand made aprons, cards,  
baby clothes and gifts**

**Telephone: 0433 88 55 91**

**Email: airsmith@optusnet.com.au**



Unique special occasion cakes  
designed to your needs and  
delivered to you freshly baked.  
Everyday Cakes and Catering  
for many occasions are also  
available on request.

Tel: 5473 4172

Mobile: 0403 551 099

info@deborahleacakes.com.au  
www.deborahleacakes.com.au



tre and sporting fields. Named after George McCredie it was part of his land grant. He was a prominent local business man, Member of Parliament and Mayor of Municipality of Prospect and Sherwood 1892-1895 (now City of Holroyd).

A park named after John Thomas Campbell (1770 – 1830) is a part of his original Land Grant of 1823 of 1000 acres. He was Secretary to Governor Macquarie from 1810–1820, Provost Marshal from 1812–1822 and Founder of the Bank of New South Wales (1816–1817) was first President of the Board of Directors.

The Woodville Public Golf Course, an 18 hole golf course, was also part of John Thomas Campbells Land Grant as was the Swim Centre which consists of an indoor all year round heated pool, outdoor pools, a skateboard track and ample parking. The Sporting fields are run by the Guildford Leagues Club. This complex also houses the local Bowling

Club and Sports grounds and has a Hall to rent. Local football and soccer games use the main oval.

At the 2011 Census, there were 19,851 residents in Guildford. About half of residents were born in Australia, with the top other countries of birth being Lebanon 12%, China 2.8% and Vietnam 2.0%. Languages other than English spoken at home included Arabic 33.0%, Cantonese 2.8%, Turkish 2.4%, Mandarin 2.3% and Vietnamese 2.0%. The top religious affiliations in Guildford were Catholic 30.6% and Islam 27.2%.



*Linnwood House listed as a building of state significance*

Guildford has the dubious honour of being home of the first KFC in Australia



*St Michael's Church (above). and The Guildford Arab Baptist Church (left)*

03 5472 2202

**Thompson family**  
Funeral Directors

Castlemaine & District Funeral Parlors

123 Mostyn Street  
Castlemaine, Vic 3450

At Thompson Family Funeral Directors, we pride ourselves on the individual care and attention to every detail. Located in Castlemaine, Victoria, Australia, the Thompson family has four generations of history and has been professionally operated for over 60 years.

Phone 5472 2202 - 24 hrs a day-7 days a week

[www.thompsonsfunerals.com.au](http://www.thompsonsfunerals.com.au) email: [peter@thompsonsfunerals.com.au](mailto:peter@thompsonsfunerals.com.au)

# **Tenth Guildford Banjo Jamboree**

## **20th to 22nd September, 2013**

### **Call for Volunteers - We Need YOU!**

Our volunteers are the lifeblood of the Jamboree organisation. Three hours of labour or more is rewarded with a weekend pass (can be taken in two shifts). Shorter times can be donated in return for a smile and thanks!

The following is a general indication of the days, general times and types of jobs. On receipt of your expression of interest, the volunteer team will contact you to firm up more specific details. Please underline or circle your preferences, or write more specifically in the comments box below. Don't forget to fill in all requested details.

#### **Wednesday 18th September:**

- \* Outdoor set-up.
- \* Transport (van, ute, trailer, truck).
- \* Morning / Afternoon.

#### **Thursday 19th September:**

1. Outdoor set-up.
  - \* Transport (van, ute, trailer, truck).
  - \* Morning / Afternoon
2. Indoor venues set-up and decoration.
  - \* Morning / Afternoon.

#### **Friday 20th September:**

1. Outdoor set-up.
  - \* Transport (van, ute, trailer, truck).
  - \* Morning / Afternoon
2. Indoor venues set-up and decoration.
  - \* Morning / Afternoon
3. Reception / Checking wristbands at venue / Merchandise selling / General "gopher"
  - \* Afternoon / Evening

#### **Saturday 21st September:**

1. Cleaning, set-up, furniture moving:
  - \* Afternoon / Evening.
2. Reception / Checking wristbands at venue / Merchandise selling / General "gopher"
  - \* Morning / Afternoon / Evening

#### **Sunday 22nd September:**

1. Set-up, furniture moving, cleaning up:
  - \* Morning / Afternoon / Evening.
2. Reception / Checking wristbands at venue / Merchandise selling / General "gopher"
  - \* Morning / Afternoon

#### **Monday 23rd September:**

- \* Clean-up, both indoor and outdoor.
- \* Morning / Afternoon

**Name/s:**

**Postal address:**

**Phone (H):**

**Phone (W):**

**Phone (M):**

**Email:**

**Comments:**

#### **To return:**

- \* Return in person to the Guildford General Store, the Guildford Post Office, or the Guildford Family Hotel.
- \* Mail to: Guildford Banjo Jamboree, PO Box 917, Guildford, Victoria, 3451.
- \* Email to: [banjojamboreegirl@gmail.com](mailto:banjojamboreegirl@gmail.com)
- \* Phone contacts:
  - Beverley (Volunteers): 5473 4520
  - Jeanette (Chairperson): 5473 4201



## Letters

### Not so smart outlook

With the NBN so-called broadband internet tower now being built on a beautiful hilltop on the semi-rural edge of Guildford, the evils of technology seem to have won the day. No more choice - we get irradiated whether we want to or not.

Despite it violating our human rights that were enshrined in Victoria a few years ago. They use us as cash-cow guinea pigs, but we are biting back!

Who wants to connect to such a wobbly wireless service anyway? Where trees in-between and a few others also on-line greatly degrade the signal? I'm hoping that customers will stick to ADSL broadband on the existing copper Telstra wires, it's the surest and most healthiest option for the internet, good for several kilometres around the phone exchange. This unpopular tower/service may then become totally redundant, as we eventually gain fibre optic, high speed internet, which is already connected to several premises in the village.

I urge people who may think they will be affected to monitor the levels of electro-smog around them, before and after the tower is switched on. And to get up to speed on the consequences of elevated levels of electro-smog in our community.

Contact the Citizens Advocating for a Safe Environment for more information, email - [info@geomantica.com](mailto:info@geomantica.com)

Alanna Moore Yapeen

### Post Office needs help

Thank you very much David for your feedback (*Globe* #93 July)

Wal and I would like to give the community an update on our EPOS status as most of you would know it took some doing to get the machine, even though we were short of the 10,000 transactions needed. When the machine was installed we were told if the machine was not viable we could get it taken away.

We are still not there yet, so I'd like to remind people to please use this service where possible.

Payment of bills, bank deposits and withdrawals, phone and broadband top-ups, money orders, load and go visas etc are all available from this post office. If you would like to support us but are not sure what we can do please ask.

Michelle Post Office

### Maurie Dynon for Landcare Award

Maurie Dynon has been nominated for this year's Victorian Landcare Awards in the Individual Landcarer Award.

The Awards will be presented at a special ceremony on the 28th August at Government House.

Maurie was the *Guildford Globe's* Person of the Year in 2011 and has been involved in the Landcare movement since 1995. He has been married to Lois for 57 years.

## Deal with the best

Irrigation and water solutions for the home, farm or business

Design | Supply | Install



1300 664 670

[www.midlandirrigation.com.au](http://www.midlandirrigation.com.au)

BALLARAT 1009-1011 La Trobe St BENDIGO 84-86 Strickland Rd  
KYNETON 55A Edgecombe Rd

### Chapple's Cairn Curran Estate



*Makers of award winning table wine.*

Cellar Door, 329 Seers Rd, Welshmans Reef, 15 mins drive from Maldon.



Scan the Code to visit the Web site and Map or phone 5475 1039

# News from the

In the first week of this term at Guildford Primary School, we were fortunate to have a loan of the 'Little Green Wagon', an environmental education trailer from Calder Regional Waste Management Group.

The loan of the trailer worked in well with our integrated unit this term, which for the junior class is 'How does weather and water affect the world we live in?' and in the senior class 'How can we prepare for and manage the natural changes that happen to our planet.'



The children had the opportunity to try out several of the activities that were offered in the wagon, such as understanding the difference between recycling, reducing, reusing and waste when it comes to placing everyday household items in the bin. Any education that can go to reducing our mounting landfill problems is a bonus.

Our chooks have a lovely vacation at April Deal's house over the holidays and are now back in residence with a revamped chook house thanks to some

dedicated parents.

Over the holidays we held a BBQ fundraiser outside the Castlemaine newsagent to raise some much needed funds for the kitchen fit out. We are excited about the pending instillation of our new kitchen and have carefully removed the old one. If you are in need of some timber kitchen cupboards, including the sink and taps we would like to see them go to a new home and are asking for \$150 ONO for 9 mtrs of cupboards complete with solid timber doors. Please see us at the school if you are interested or would like to inspect them.

On Friday 26th of July we held our annual tree planting day and were supported by Maurie Dynon from Guildford Landcare. We are again grateful to the Guildford Landcare group for their generous donation of plants and their continued support towards the school.



Castlemaine Toyota and Planet Ark also provided the tree guards and stakes along with a few goodies for the students. The students enthusiastically helped get the trees planted on the western boundary of the school and where possible, worked with their buddy (One senior student working with a junior student).

The senior class then helped Mr

Mac to plant out the garden bed bordering the oval with a range of native ground cover plants.

Earlier in the day we had a visit from Peter Sansom who is associated with the Hub in Castlemaine, Part of MASG. He introduced the class to the concept of a wicking bed and the science behind how it works, complete with a cut-a-way model that he has produced. It was a fascinating talk



and we are now keen to make our own wicking bed to add to the variety of different beds that we have in the garden.

If you have any old tea pots or LARGE tea cups (in any condition) that you no longer require, we would love any donations to use as part of our art project, based around the Mad Hatters Tea Party, from Alice in Wonderland. Feel free to drop them in to the school or the Post Office for collection.



**fitnfoxy**  
PERSONAL TRAINING

**TERM 3 starts Mon 15th July**

**Monday**  
6.30pm Boxercise - Casual \$13

**Tuesday**  
5.45 Circuit - Booked out  
6.45 "Beginners" Indoor Spin-Bikes available contact Sharon For Spin, fill in waiting list. Contact Shaz to get your name down

**Wednesday**  
10.15 Mum and Bub - Casual \$13  
**Note: during August this class at 9.15**  
6.30 pm Indoor Spin-booked out but fill ins needed call Shaz

**Thursday**  
5.30 Boxercise class spots available contact Shaz  
6.30 Circuit- Booked out

**All Classes are held in gym except Mum n Bub class which is held at the Botanical Gardens**

For bookings or info call Sharon on 0417 347 372  
email: shaz@fitnfoxypersonaltraining.com.au

**Maree Edwards**  
State MP for  
Bendigo West,  
including Guildford



Electorate Office  
Ph 5444 4125  
maree.edwards@parliament.vic.gov.au

**GUILDFORD  
CEMETERY  
TRUST**

---

**Contact  
Max Kay,  
Secretary  
Phone 5473 4419**



# Taradale's big night

This year's Taradale Winter Ball on 17th August is dedicated to Hollywood Glamour and will feature the silky tones of acclaimed songstress Tracey Candy. Tracey will be channeling Hollywood Divas including Marilyn Monroe, Doris Day, Peggy Lee, Judy Garland, Rosemary Clooney and more.

There will be a special appearance from the reclusive Miss Tara Dale performing a variety of show stopping tunes from the 40's and 50's. Guests will



also be graced by the talents of jazz maestro Meg Corson, appearing as a sultry torch singer after supper. Torch singers traditionally sing laments of unrequited love and Meg's sultry jazz voice is perfectly suited for the style.

This is the fourth annual Taradale Winter Ball and all proceeds go to support the Taradale Mineral Springs Festival and the Taradale Arts Group. The Festival's Entertainment Committee strongly believe in supporting local musicians and performers and funds raised at the Winter Ball go towards paying entertainers for their services at the acclaimed Mineral Springs Festival in March. Similarly the Taradale Arts Group allocate their funds to staging the annual Community Art Exhibition, held in conjunction with the Festival.

It's rare that a great night's entertainment provides such a strong community benefit, but the Taradale Winter Ball is just such an event. It's a terrific coming together of the local community supported by visitors from Castlemaine, Bendigo and Melbourne. To help facilitate guests a bus service is provided, transferring guests from Castlemaine to Taradale with stops in Chewton and Elphinstone. Cost is only \$10 return (Castlemaine and Chewton) and \$5 return (Elphinstone) and bookings are essential by ringing Jacqueline on 0425 323 005.

Tickets to the Taradale Winter Ball are only \$25 pre-purchase or \$30 at the door. Tickets are on sale at Taradale Wine & Produce or online at [www.trybooking.com/DEXL](http://www.trybooking.com/DEXL) and include a delicious supper with drinks at reasonable bar prices.

## ...and they're tapping in Guildford

There will be Tap dancing at the Guildford Hall on Saturday 10th August..

It's called Ms Evie's Tap Extravaganza and it promises to be a real event. There's a G rated versions at 2.00pm and a more risqué PG version at 7.30pm.

There will be professional tappers, Ms Evie's tap students together with Guildfords uke players with go-rillas and stuntmen.

It sounds like a show that's not to be missed.

It's on at the Music Hall and to reserve your seat call Ms Evie on 0403 126 538

# Aurora Calling- The Result of a Joint Observation

That's the name of the award winning play by Catherine Ryan set to open at Lot 19 in Castlemaine on Friday August 23.

Inspired by the true story of Australian scientists Pene Greet and Gina Price, *Aurora Calling – The Results of a Joint Observation* cycles a year in the lives of Trisha and Jackie, physicists studying the magnificent, magical auroras.

*Aurora Calling* play runs over two weekends from the 23rd August at Lot 19, Langslow St.. Castlemaine


You can purchase tickets at [www.trybooking.com](http://www.trybooking.com) Search *Aurora Calling* or at Shoe Connection, 79 Mostyn St, Castlemaine (opp.Maxi IGA) ph:5472 1251 Adults: \$20 Conc:\$17


The script received support from Arts Victoria, Regional Arts Victoria and Playworks.

It was originally conceived as a stage performance, but *Aurora Calling* was also adapted for an ABC Radio National Drama production in 2008.



This Radio script won an AWGIE for Best Radio Adaptation.





Maldon & District **Community Bank®** Branch is doing deals on home loans. Right now you can save 0.7%pa off the standard variable home loan rate when you borrow more than \$250,000, or 0.5%pa if you borrow less.

And with a home loan package you can get even better value, reduced fees and added flexibility.

Drop into your nearest branch at 93 High Street, Maldon or phone 5475 1747 to find out more.

All loans are subject to Bendigo Bank's normal lending criteria. Fees, charges, terms and conditions apply. Bendigo and Adelaide Bank Limited ABN 11 068 049 178 AFSL/Australian Credit Licence 237879. S41790H (166521\_v3) (3/10/2012)

**Maldon & District Community Bank® Branch**



## Food + Entertainment

Guildford Family Hotel  
Wed: Pizza Night  
Thurs: Parma Night  
Fri: Dinner Jam Session  
Sat: Dinner Live Music  
Sun: Lunch with live music  
Folk Club Wed 21st August  
[www.guildfordfamilyhotel.com.au](http://www.guildfordfamilyhotel.com.au)

## V-line Bus

• Mon-Fri	• Saturday
Dep. Guildfd	Dep. Guildfd
06.30	9.25
07.20	18.45
10.25	Dep. Cas.
15.05	Stn
16.20	10.00
Dep. Cas. Stn	19.20
07.25	• Sunday
13.00	Dep. Guildfd
20.10	18.15
	Dep. Cas.
	Stn1
	9.20

## Organisation Meetings

Progress Association Meeting. Monday 2nd September Guildford Public Hall.

All welcome 7.00 pm.

John Powell Reserve Committee of Management Monday

9th September .Pavilion JP Reserve 7.00pm

## Guildford Bus

Wednesdays  
Maryborough  
9.30 pickup  
Public Hall Return 3.30  
Monday + Thursdays  
Castlemaine  
9.40 pickup  
Public Hall Return 1.20  
Booking 5476 2360  
Fare \$5.00 ret \$3.00 o/w

## Groups

Social Networks (Craft)  
Wed 14th + 28th August;  
10th Sept. Sat 7th Sept;  
10.30 am Public Hall.

## Classes

Strength Training  
Tuesdays and Thursdays  
Campbells crk Community Centre 1-2.00pm \$5 per session  
Tai Chi for  
Arthritis with Teresa  
Fridays 10-11 in the  
Hall Details: 5473 4180

## The *Guildford Globe*

**Published by:** Guildford Progress Association Inc.

**Editor:** Rajeev (Ian Oshlack)

**Ph:** 5473 4124 **Mob:** 0419991140

**Email:** [guildfordglobe@hotmail.com](mailto:guildfordglobe@hotmail.com)

**Web:** [www.guildfordglobe.com](http://www.guildfordglobe.com)

**Proofreading:** Mary Soderiou

**Advertising:** Ph: 5473 4124

**Post:** Box 952, Guildford, 3451



Proudly supported by the customers of

Maldon & District

Community Bank® Branch



•Viognier• •Chardonnay• •Shiraz• •Cabernet

**Recent awards**  
All estate grown, come and visit  
•2010 Chardonnay, Silver medal,  
•2012 Viognier, Silver medal, Fed

our cosy cellar door  
Daylesford Wine Show 2011  
Square Wine Showcase

Brian & Mandy Jean • 6720 Midland  
T: 03 5476 4457 M: 0438 253 506

Highway • Guildford 3451

[www.guildfordvineyard.com.au](http://www.guildfordvineyard.com.au) • Open

weekdays & weekends 12 - 5 pm