

The Guildford Globe

•Issue 99 •February 2014
•www.guildfordglobe.com
•guildfordglobe@hotmail.com

Inside



The Nets...it's simply not cricket. P4



Is this really Guildford. P9



How "fire ready" are you? p3



Meet the new President of the Guildford Progress Association. p3

Plus cats eating parrots, people munching apples in Harcourt and the Maldon Market is growing.

This is a disgrace!

Not our problem - Council

The surface of the Fryers Road and the Midland Highway has gone from bad to worse.

The strip of road across from the Public Hall to the Pub has deteriorated to the point of dangerous.

When the Globe pointed this out six months ago we were informed that it would be repaired when the weather improves and we're still waiting.

The damage was done by the number of heavy trucks that continually roared through town last year and the year before. In their wake they left the damage and now its time to fix it.

Mal Kersting, VicRoads Regional Director, said in August that he was "well aware of the surface deterioration."

He said it was basically the responsibility of the Mt. Alexander Shire Council, but that both organisations were working together to elicit repairs. The program, at that time, was being finalised and repairs would commence in the warmer months.

However a spokesperson for The Mount Alexander Shire Council said this week that Council is aware of concerns about the condition of the road



pavement at the intersection of Fryers Road and the Midland Highway and has inspected the site.

"The road pavement condition, whilst somewhat deteriorated, poses no safety concerns."

As the Midland Highway is declared an Arterial Road, under the responsibility of VicRoads, Mount Alexander will continue to work with VicRoads to plan any required repairs to the road pavement.

We say it time for the Council and VicRoads to get their act together and work out who is responsible, stop the excuses and fix the problem.

In a footnote Mr. Kersting mentioned that Fryers Road was a local road and that B Double trucks are not permitted. He urged residents to call VicRoads Transport Safety Service with number plates or trucking company details. Their number is 5434 5000



Greetings

They said last year was the hottest on record but judging by the way this one has started 2014 could give it a run for its money.

It's the consecutive days of over 35 degree heat that's the killer especially where fire is concerned.

The CFA are continually urging us to have our bushfire plan in place, which to me is good advice.

On page 3 Ray Pattle outlines how Guildford is fire ready and how the local brigade is coping.

You will also notice on page 5 and ad for a new editor for the Globe.

I've been running this erstwhile publication for just on three years and

it's time to move on. The Globe is presently a one man operation and the publication does suffer if I'm not here. As we are planning a number of trips away this year, we felt that it was best to hand over the reins.

Of course there has to be someone to hand the reins to. Being an unpaid job, it's the type of pursuit that requires a certain level of dedication, a degree of tenacity and a hefty amount of chutzpah to actually survive.

Above all, you will have to be fearless. The Globe prides itself on taking a stand and pursuing it. To highlight the issues and bring them to the attention of those who may be able to do something about it.

However, that being said, if you are the one who become editor, it will be yours to do what you will.

If you think you have the intestinal fortitude to take it on, then please answer the ad.

Enjoy this issue
Rajeev

Big Tree gets recognition

The Big Tree has been officially recognised by the National Register of Big Trees.

It was nominated in 2011 by Abigail, Lucinda and Eloise Derrett, grandchildren of Marie and Tony Derrett.

Common Name:
Gum – River Red

Scientific Name: *Eucalyptus camaldulensis*

Circumference: 11.00 metres (433 in)

Height: 33.00 metres (98 feet)

Crown: 37.00 metres (121 feet)

Points 561

Nominators: Abigail, Lucinda and Eloise Derrett

Year measured: 2009

Age: 500

The biggest trees in Victoria are on private land but this is the biggest in a public area.

Measured and photo by Dean Nicolle 14/12/2011



Eloise, Lucinda and Abigail Derrett at the Big Tree in 2011

Letter

Community plan seeking final input

Most of you should be aware that a community plan is being developed in conjunction with the Shire, either through the Globe, the workshop and community expo days, or through surveys that have been distributed before.

There have been some fantastic suggestions coming through, so now the Plan is being refined and nearing completion. We are asking for your feedback and, perhaps more importantly, for your interest and involvement in making the Plan a reality.

There is an online survey, which can be found here: <http://www.surveymonkey.com/s/8JGF9C8>, or you can complete a printed versions that you will find in this magazine.

Please note: this is the same survey that was distributed at the Progress Association's town Christmas Party. If you have completed this already, then thank you. If you have something to add, then please let us know. We are hoping to launch the plan in just a few short months.

Caitlin Matthews
Chair, Guildford Community Planning Forum

Cemetery rate rise

The Guildford Cemetery Trust take the opportunity to advise that a review of fees will be undertaken in the new year.

Cemetery Trust meetings for 2014 will be on 24th February, 26th May, 25th August and 24th November in the Public Hall 7pm

Thompson family
Funeral Directors

Castlemaine & District Funeral Parlors

03 5472 2202

123 Mostyn Street
Castlemaine, Vic 3450

At Thompson Family Funeral Directors, we pride ourselves on the individual care and attention to every detail. Located in Castlemaine, Victoria, Australia, the Thompson family has four generations of history and has been professionally operated for over 60 years.

Phone 5472 2202 - 24 hrs a day-7 days a week

www.thompsonsfunerals.com.au email: peter@thompsonsfunerals.com.au

How Guildford is 'Fire Ready'

Whilst fires are a year round issue, the declaration of the Fire Restriction Period commencing 2nd December for our area, justifiably elevated everyone's concerns.

Guildford is rated in the Highest Fire Risk Category for the State of Victoria and as such, the CFA are compelled to provide our village with a Fire Readiness presentation. In contrast to a number of previous presentations it was pleasing to see the presentation held 18th December attended by more than 40 local residents. The CFA presenters from Bendigo, travel Central Victoria addressing similar concerned audiences and this was evident in their ability to answer the many questions flowing from those who attended.

Whilst their address covered many aspects concerning fire danger, the emphasis was on the many avenues available to the public for current fire situations along with guidance on the requirement to 'Leave Early' in the appropriate circumstance.

The Mount Alexander Shire Fire Prevention Officer conducted his rounds of property inspections during December and found that Guildford generally was in an excellent state of tidiness. So congratulations to all who made a special effort to reduce any fuel load within their property!

A number of citizens have contacted our Brigade seeking guidance on their ability to undertake certain activities.

Continued on Page 6

New committee or is it?



Yes folks it's the new committee which is (apart from the addition of Bill Sanderson) in fact the old committee. From left is (Tony Shea (treasurer) Sheree McIver (secretary) Victor Rodda (vice

president) Pam Adams, Sanderson, Helen Thomas and Tony Derrett, in front with a new gavel presented to him by Tony. Derrett is president Jim Franzi.

As the say folks, "as you were".

Race promotion puts disability in to perspective

A group of councillors and workers for the Mount Alexander Shire Council were put through their paces recently in a promotion designed to demonstrate the difficulties facing the disabled in our community.

Simulating such areas as wheel chairs, walking frames and white canes they were asked to simulate a

number of everyday situations.

Under the pseudonym The Realistic Race the promotion has been done in councils all over Victoria.

The councillors discovered there were many shortcomings in being disabled in this city and opened their eyes to what has to be done and done immediately.



Storage

STORAGE UNITS

6 x 3 — \$150/mth

3 x 3 — \$98/mth

3 x 1.5 — \$80/mth

We stock all your packaging needs: boxes, bubble wraps, tape, etc.

62 Sutton Rd, Maryborough (formally McPherson's)

Office hours:

Mon-Fri 9 am to 12 noon

Ph. 5460-5667; AH: 0419 364 815

email: store@vaultselfstorage.com.au

OTHER STORAGE

for BOATS, CARAVANS,
TRAILERS, INDUSTRIAL,
DOCUMENT, etc



VAULT
SELF STORAGE

MALDON
MARKET
Hand Made • Home Grown

**Second Sunday
of every month
Starts November 10th**

Fountain Street, Maldon, Central Victoria
historic goldfields region

www.maldonne.org.au

Cricket nets get in a tangle

A move by the players in the Guildford Cricket Club to have the nets moved at the John Powell Reserve is being considered by Council.

At present it is compromised because where the nets are currently placed making it impossible for some bowlers to do their run up.

Cricket Club representative, Simon Gearing, told the *Globe* that they are placed incorrectly to be effective

“Depending on the time of day, bowlers and batsmen have the sun to contend with, as well as not only having a proper run up but also large stones on the path” he said, “this makes it quite dangerous.

“They also encroached on the land when they built the new tennis courts creating a ditch.”

He said it makes it hard to actually watch players at the nets.

At the moment the Cricket Club have floated the plan to Council. They basically want to move the nets to somewhere adjacent to the oval, which will be a better

Tuesday was wedding night at the Pub.



If you heard the music wafting up from the pub last Tuesday night and wondered what was going on all can be revealed.

Publican Terry Douglas and his partner

Nadia got married surrounded by family and friends.

On another note Terry says there have been a few people look at purchasing the pub but as yet nothing concrete.



option.

Brian Adams, President of the John Powell Reserve Committee said that the Guildford Cricket Club is in the early stages of coming up with options in this regard.

“So far nothing has been put to the John Powell Reserve Committee and we are not expecting a detailed proposal any time soon,” he said, “The Committee will be more than happy to work with the Cricket Club on this project when more information is to hand.”

Swimmers denied

A crowd had gathered at the Castlemaine Pool. It was 11.00 and 42 degrees, but the swimming centre remained locked.

After 20 minutes someone read the sign that said during school hours the pool didn't open until 1.00.

It is time to consider an early morning session for dedicated swimmers instead of the middle of the day. What about it Council?



HARCOURT

APPLEFEST

8th March 2014

Homegrown Harcourt

Local wine and cider for tasting and purchase.
 Meet the growers and taste their produce.
 See cider being made at Henry's of Harcourt.
 Festival market featuring food, wine & crafts.
 Cooking and gardening demonstrations & workshops.
 Baking competition: best apple pie, muffin or cake.
 Pet parade and Harcourt's famous ferret race.
 Exotic kashmiri belly dancers.
 Kids carnival featuring jumping castle, face painting,
 animal petting zoo, pony rides.
 Youth Zone featuring climbing wall, circus demos, hip hop displays.
 Traditional brass band and pipe band performances.
 Try your hand at the Tri-apple-thon.
 Vintage car show & colourful street parade.
 International Tea Cosy Display and Harcourt Art Show.
 Enjoy live music from jazz diva Meg Corson & ska-giants King Stone.
 Open air movies on Saturday night.

There's something for everyone at the Harcourt Applefest
 Saturday 8th March, 9am-5pm
 Down town central Harcourt, just 7 kms from Castlemaine,
 30 kms from Bendigo, adjacent to the Calder Highway exit.

www.harcourtapplefest.org.au



Post Office could be in firing line

What with all the talk about the post office losing money and the need for rationalisation, along with Tony Abbot desperately cutting costs spare a thought for our post office.

It is true that since email was introduced we are mailing less and despite that fact that the internet has also lifted the rates of parcel post, it does not auger well for smaller rural post offices.

There are some 2500 post offices in Victoria and sad to say some are going to have to go. Not without a fight I would suspect.

Which leaves one with the question: where would we be without our post office?

Most of us use it at least once a week and many as often as once a day. We pick up our mail whether it is over the counter or via post boxes. And what about parcel delivery, where do they drop off.

Not to mention the other services that the post office provides such as bill paying, money transfer, special delivery and the sale of envelopes and boxes.

Word is they may consolidate us with Campbells Creek but in the long term that would create a major inconvenience for many users, especially those who cannot travel.

Nothing is certain yet so let's be aware when and if it happens we'll be ready to stand-up for the cause.

GUILDFORD CEMETERY TRUST

Contact
Max Kay,
Secretary
Phone 5473 4419

The Guildford Globe Editor

The Guildford Globe is a monthly periodical that circulates through Guildford, Castlemaine, Campbells Creek, Newstead and other areas.

The current Editor is retiring after three years in the position and therefore, we are looking for someone to fill this challenging role.

The Guildford Globe is an award winning publication and you will be expected to maintain it at the high standard to which it currently aspires.

You will be conversant with all publishing procedures including writing, news gathering, layout, design, production, advertising, distribution and web design.

The person we seek will be a self starter and highly motivated and show the initiative to dig deep for stories that are relevant to this town and surrounding districts.

You may work alone or in a team to get the job done.

The role of editor is purely voluntary with only out of pocket expenses covered.

Apply in the first instance by email to guildfordglobe@gmail.com
or mail at Box 952, Guildford, 3451.

Limestone Track

Vineyard

Established 1989

Fine wines from the Guildford region.

John & Judy Burford - 48 Limestone Track
Guildford 3451

Ph 03 54764266

www.limestonetrack.com



Your Home

Choose a home loan that's right for you

Whether you are purchasing your first home or your next home, refinancing or investing in property, Bendigo Bank offers you the freedom and flexibility to make your home loan work for you.

And remember, when you choose to borrow with Bendigo Bank, you not only make a decision that benefits you, you make one that benefits your community.

Drop into your nearest branch at 81 High Street, Maldon or our agency at the Newstead RTC or phone 5475 1747 and find out more about choosing the home loan that's right for you.

Terms, conditions, fees and charges apply. All loans subject to the bank's normal lending criteria. Bendigo and Adelaide Bank Limited
ABN 11 068 049 178 AFSL/Australian Credit Licence 23787. HL13

Maldon & District Community Bank® Branch

Deal with the best

Irrigation and water solutions
for the home, farm or business

Design | Supply | Install



1300 664 670

www.midlandirrigation.com.au

BALLARAT 1009-1011 La Trobe St **BENDIGO** 84-86 Strickland Rd
KYNETON 55A Edgcombe Rd

Fire Ready

Continued from page 3

ties during the Fire Restriction period. People with similar concerns are encouraged to obtain a copy of the 'CFA - Can I, Can't I' brochure, copies of which are obtainable from the Guildford General Store or the Post Office.

Many other excellent CFA publications are available upon request from the Guildford Fire Station.

The recent spell of temperatures in the mid 40s has brought with it the requirement of numerous call outs for the Guildford Brigade. At times, the Guildford Tankers were both out at local incidents and moving from one to another without break. Despite the high number of callouts it is pleasing to report that nothing of any magnitude has occurred in close proximity to our village. The fire on Limestone Road down near the intersection with Daylesford – Newstead Road has probably provided our Brigade with its most demanding call out to date.

Alert residents might have noticed that our Fire Station



From Left: Replacement Tanker, Community Tanker & Newstead Group Forward Command Vehicle

has been housing a new Tanker, being a replacement for Guildford Tanker 1 that suffered damage at the Limestone Road incident. It was whilst taking this replacement tanker on a familiarisation drive in the Porcupine Ridge area that the crew noticed smoke in the proximity of Kemp's Bridge.

Upon reporting their sighting to VICFIRE the crew eventually located the fire and immediately called for support. Their vigilance along with their follow up actions surely averted a major incident and has been praised by all attending the fire.

Thank you, to those members of our Community who have approached me expressing their sincere appreciation of our tireless efforts in these current oppressive weather conditions. It is very satisfying to receive such encouragement. Many thanks also to those kind people that have taken the opportunity to recognise these efforts with donations to the Guildford Brigade.

The Brigade was the beneficiary of such appreciation when they received during the year, computer equipment funded by a deceased estate bequest in recognising the importance of the Brigade to our village, and the need for its local support. This equipment now allows prompter despatch of our tankers and provides an ability to monitor their progress to a fire. Once at the fire, from our Fire Station we can in

Continued on page 14

Draft Guildford Community Plan

December 2013



Tell us what you think – Final say on our plan

Background:

Mount Alexander Shire Council received State Government Funding to develop Community Action Plans within the Shire. Guildford was one of nine nominated to develop a community action plan.

In April 2013, a first meeting was held with interested residents that responded to being involved in the first Guildford Community Plan from an earlier Council survey.

This group then planned and held a Guildford Orientation day held in Big Tree Park in late May. The aim of the day was threefold. It was to inform Guildfordians not only of the Community Planning process but to enlighten people of what community groups are operating in the town and for people to get to know one another.

Then in early June a community workshop was held to start to form the basis of the Guildford Community Plan and it was at this workshop that the Guildford Community forum group was formed. Since then this group has been meeting monthly to progress the plan.

From the responses received in the initial survey that Council had developed earlier in the year and the feedback from the workshop, the forum put together a list of possible actions to form the basis of the Guildford Community Plan. It then sought feedback from the Guildford Community as to whether there was support for the proposed actions. A survey was sent to every home seeking feedback and three community feedback sessions were held. Over forty responses were received.

Subsequently the forum took on board the feedback and made changes to reflect the community desires. Some new actions were proposed and others were removed due to little support for the concept. This survey is now seeking your feedback on the final draft of the Guildford Community Plan.

How you can contribute?

Have a read of the draft Guildford Community Plan and fill in this feedback form. Please feel free to add comments and nominate actions that you could possibly assist with. – Drop it in to the Guildford Post Office or send back to Mount Alexander Shire Council, Attention: Chris Walters, Po Box 185, Castlemaine, VIC, 3450 or drop it into the Civic Centre 27 Lyttleton Street, Castlemaine by **Friday 21st February 2014**

SOCIAL CONNECTIONS

ACTION	DO YOU AGREE?		CAN YOU HELP?
Advocate to all levels of government for better mobile coverage	✓	X	✓
Develop a community calendar listing all community and sporting events within the community blog	✓	X	✓
Implement an ideas suggestion box to feedback community concerns to the Guildford forum	✓	X	✓
Work with local graphic designer to make easy to read bus timetables	✓	X	✓
Develop a mechanism that maintains a sustainable Guildford blog page	✓	X	✓
Guildford forum to make regular contributions to the Guildford Globe which reports current information of activities from the Guildford forum	✓	X	✓
Advocate to all levels of government for optic fibre	✓	X	✓
Continually advocate for better phone connection for Guildford and access to a public telephone line	✓	X	✓
Comments:			

ECONOMIC

ACTION	DO YOU AGREE?		CAN YOU HELP?
Develop a community calendar of local business within the Guildford Blog	✓	X	✓
Develop a community calendar of local business to promote throughout the shire.	✓	X	✓
Ensure Guildford is included on future tourist maps.	✓	X	✓
Install a 'what's happening' board to alert incoming traffic of Guildford events	✓	X	✓
Develop a business case to council for a caravan /camping and RV (leave no trace) facilities to encourage travellers to stop in Guildford.	✓	X	✓
Organise a think local campaign	✓	X	✓
Create a trees of Guildford pamphlet	✓	X	✓
Comments:			

FACILITIES AND INFRASTRUCTURE

ACTION	DO YOU AGREE?		CAN YOU HELP?
Lobby council for a load limit on Fryers street and Fryers Road	✓	X	✓
Maintain and preserve the lookout	✓	X	✓
Explore the possibility of restoration of weir and caravan park at Vaughan Springs	✓	X	✓
Investigate the potential reopening of the Castlemaine railway line in Guildford.	✓	X	✓
Develop a feasibility study of bicycle strategy for Guildford	✓	X	✓
Do an audit of what public buildings have solar energy that can be transferred to other public facilities to share solar credits	✓	X	✓
Workshop the concept of whether we want to grow the town or stay the same size	✓	X	✓
Advocate for better road maintenance to both quarries	✓	X	✓
Engage in conversation with Bendigo Wash Sands to seek agreement from them for their drivers to slow down whilst travelling through town	✓	X	✓
Widely publicize the RTA number to report speeding trucks	✓	X	✓
Advocate for upgrade of kitchen for the Guildford Hall	✓	X	✓

Comments:

ENVIRONMENT

ACTION	DO YOU AGREE?		CAN YOU HELP?
Work with Land care to increase environmental preservation activities to Guildford	✓	X	✓
Advocate to council for regular mowing of the grass at Big Tree park and the tracks along the river	✓	X	✓
Build a community garden	✓	X	✓
Improve access to river	✓	X	✓
Install a sign acknowledging the Dja Dja Wurrung as traditional owners at Big Tree Park	✓	X	✓

Comments:

ARTS, CRAFT AND CULTURE

ACTION	DO YOU AGREE?		CAN YOU HELP?
Re start the annual Arts show	✓	X	✓
Establish a laughing group	✓	X	✓
Explore opportunities for Community Art around Guildford	✓	X	✓
Develop up a Heritage Walk	✓	X	✓
Investigate the feasibility of a People's shed possibly on the recreation reserve area	✓	X	✓
Investigate the possibility of holding a mini circus festival including a unicycle race with workshops	✓	X	✓
Comments:			

ADDITIONAL COMMENTS

Is there anything missing in this plan?

What big project do you think would most benefit Guildford and why?

What project/s would you give your time and energy to?

Would you like to take the lead in a project? Which one?

Your details:

Name:

Address:

Email:

Telephone:

Please return this form by **Friday 21st February 2014** to the Guildford Post office or mail it to Mount Alexander Shire Council, Attention: Chris Walters, Po Box 185, Castlemaine, VIC, 3450 or drop it into the Civic Centre 27 Lyttleton Street, Castlemaine

For more information please contact Chris Walters on 5471 1821, or by email: c.walters@mountalexander.vic.gov.au

Maldon market 70 stalls and growing

The monthly Maldon Market has now been running for three months continues to draw large crowds and features around 70 stalls of hand made and home grown goodies every month.

Coordinator of the Maldon Neighbourhood Centre, Alex Fisher, said that the Market Working Group could not be happier with the monthly growers and makers market.

"Our market setting is one of the most beautiful in regional Victoria with stalls sprawling through the shady Maldon Shire gardens and lining Fountain Street outside the historic Kangaroo Hotel.

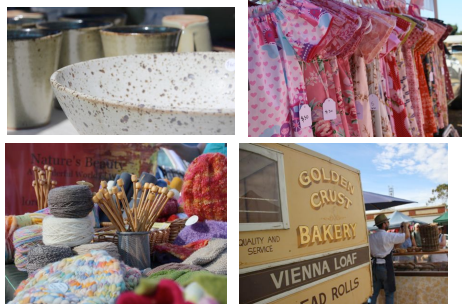
"We have had amazing feedback about both the ambience of the market and the quality of the stalls.

"Each month we have really high quality live music in the rotunda in the gardens so people have somewhere to sit and relax and enjoy market food.

"We also get a lot of feedback about the market bringing the people of Maldon out and about and getting them talking and socialising."

She said that this is really pleasing because a large reason for this market existing was to promote community connections.

The Maldon Market is held on the second Sunday of every month with the next market taking place on Sunday 9th February from 9 am until 2 pm. The market will feature:



- Organic sourdough bread baked exclusively for the Maldon Market
- Handmade jewellery made in Maldon
- Fresh produce from local farmers
- Plenty of ready to eat food including crepes, Indian food and pastries
- Lamb, beef and pork from local farmers
- Hand made clothes, accessories, ceramics, cushions and children's clothes
- Children's donkey rides and live music in the rotunda

For more information contact Alex Fisher, Market Coordinator, Maldon Neighbourhood Centre, 0417 540 176 or go to www.maldonnc.org.au

..and in Harcourt, she's all apples

The annual Harcourt Applefest on 8th March 2014 will be a time to celebrate local produce, local talent and to enjoy local wine and cider. You can also participate in a series of workshops and seminars on cooking and gardening, enjoy the opportunity to try a variety of apples and to meet the apple growers themselves.



Once the apple growing centre of Victoria, Harcourt is now rightfully proud of its award winning wineries and cider makers.

There's old festival favorites including the pet parade, belly dancers and ferret races while the celebrated annual Harcourt Art Show has expanded to incorporate a National Tea-Cosy Display. There will be Kids Carnival and dedicated Youth Zone with a huge array of entertainment ranging from traditional brass bands to up-tempo ska including King Stone and jazz diva Meg Corson. Or the play-off between the Castlemaine Highland Pipe Band and Bendigo's Clan McLeod might be more to your liking.

Continued on page 14



**SLUDGEBUSTERS
SEPTIC TANK AND
GREASE TRAP
CLEANING**

PH: 5472 3555

Maree Edwards

State MP for
Bendigo West,
including Guildford




Electorate Office
Ph 5444 4125
maree.edwards@parliament.vic.gov.au

fitnfoxy
PERSONAL TRAINING

BOXERCISE MONDAY NIGHTS
Guilford 6.30pm
Male & Female Welcome
45 min Class, \$13
Please bring a mat/towel & a drink.
Contact Sharon for further info
0417 347 372 or email.

We also have one spare Spin bike
on a Wednesday Night at 6.30pm.

Please note no classes on public
holidays or during school holidays.
email: shaz@fitnfoxypersonaltraining.com.au



THE UNWANTED GIFT - PART I

It wasn't what I wanted,
Nor something that I need,
I had no use at all for it,
I'll readily concede.

In fact it quite repulsed me,
And at this time of year,
Unlost on me, its irony,
Contrasted with good cheer.

I found it on my doorstep,
Unwrapped without a card,
In spite of this, I knew to
guess,
The giver was not hard.

This had not been the first time,
They'd given me a gift,
And though I sound ungrateful true,
They'd all left me quite miffed.

I felt compelled to thank them though,
My thanks made me pretender,
For all I really wanted was,
To write "Return to Sender!"

Appalled, I picked my gift up,
A cringe felt to my marrow,
The bloody cat had given me,
An innocent, dead sparrow.

THE UNWANTED GIFT - PART II

The other day I told you that,
My cat brought me cadavers,
His choice of gift
unpleasant and,

I wish he'd found me
others.

The death toll two and
sparrows both,
He'd got on separate days,
And though he'd had
intentions good,
His ways were not my
ways!.

I begged of him and plead I did,
To slaughter no more birds,
To leave them chirping and alive,
But he ignored my words.

Oh could it be the fault was mine,
To wish his gifts were others;
A decomposing sparrow not,
The gift to bring to mothers?

Perhaps incentive he would need,
Think donkey led by carrot,
But...I'm sad to say that yesterday,
This time he brought a parrot.

Jacky Rozenfeld

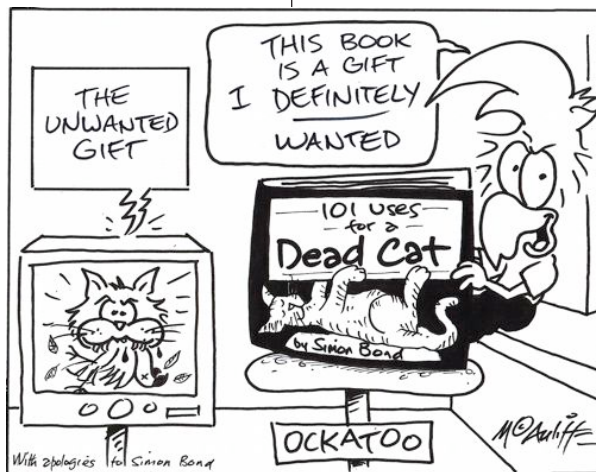


Illustration by Roger McAuliffe



**Guildford
Primary
School**

**Enquiries for new
enrolments welcome!**

Tel 54734241

or email:

guildford.ps@edumail.vic.gov.au



Stephen P. Cole

Civil Celebrant

Accredited-Professional-Caring
For all occasions

Mob: 0421 475 943

Email: hotcoles@gcom.net.au

**GUILDFORD
POST OFFICE &
ACCOMMODATION**

**PLEASE COME IN
AND SEE OUR
NEW RANGE OF
GIFTWARE**

TRADING HOURS:
MONDAY- 8.00-6.00
TUESDAY-FRIDAY 8.00-5.00
SATURDAY- 9.30-12.00

Guildford, Tasmania (or what's left of it)

The Emu Bay Railway was a successful private rail business in Tasmania, and was the longest lasting and most successful private railway company in Australia. Unlike the present day Melba Line the Company ran the line all the way to Zeehan from Burnie, carrying minerals and passengers as an essential service for the West Coast community. In 2004 the Company and its railway line were taken over by TasRail.

Initial attempts to link the West Coast of Tasmania to more settled areas commenced in the 1870s when the Van Diemen's Land Company engaged John C Climie to undertake a survey of a line from near Burnie to Mount Bischoff.

The Emu Bay Railway Company commenced operations in its own name in 1897 and its operations were taken over in 2004 and absorbed into TasRail. It served Guildford, Rosebery, and Zeehan, the connection between Zeehan and Regatta Point being a government made and run line. During the construction of the Pieman River hydro electric scheme in the late 1970s it had its route changed and new bridges were built.

The railway is famous for its con-



Today Guildford is nothing but ruins. However, in its day, it was an important stopping off place on the Emu Bay Railway.

nection of Queenstown with Burnie for the 1912 North Mount Lyell Disaster, where the times made on various sections were never bettered. The railway was also one of the more successful users of the notorious wartime Australian Standard Garratts [ASG], during the 1960s.

For a short period in the 1960s before the completion of the Murchison Highway, the railway had a passenger and road vehicle train named the West Coaster between Burnie and Zeehan from 1961 to 1964.

On the 8th March 1964 the last train to Zeehan was run as an (A.R.E.A) Special train. Thereafter the line was basically goods only excepting a twice weekly 'mixed' which subsisted until

1983, using 'West Coaster' cars ABL1 and 2, which retained their two-tone blue livery.

The line was truncated to Rosebery and then extended again over most of the line to Zeehan to its current terminus at Melba Flats Melba Flats where the Mount Lyell company and the successor companies that followed trucked their ores from Queenstown.

At its peak as a steam operation the railway had approximately 23 stopping or named places (including names for watering locations and other passenger operation related points) on its line and adjacent lines:

Guildford was one of the junction stations and a small village that is no longer standing.

BAKER EARTHMOVING SERVICES

PLANT

•Excavators 5 & 13 tonne •Tip Trucks 6 & 10 metre
•Post Hole Auger •Rock Grab •Roller

SERVICES

•Trenches •Drainage •Foundations •Driveways •Retaining Walls •Septic •Land Clearing •Erosion Control •Explosives

Call Jai Baker on
0419 364815 or Sharon
Baker on 0417 347372



bakerearthmoving@skymesh.com.au

RHYS FORD ELECTRICAL

0427 430 830



Unique special occasion cakes designed to your needs and delivered to you freshly baked. Everyday Cakes and Catering for many occasions are also available on request.

Tel: 5473 4172
Mobile: 0403 551 099

info@deborahleacakes.com.au
www.deborahleacakes.com.au

No half measures at Wholefoods

Michael Watson was looking around to set up his wholefoods business and thought why not here in Guildford.

It's a whole-some sort of a town.

And so he did, on Sunday, Monday and Thursdays you'll find him in his shop in the lane at the rear of the Pub. The other days he's working the markets and making deliveries.

He sells all manner of dried goods from dates and sul-tans through to oats, quinoa, dried beans and spelt, most packed in 250 gram bags.



applefest

Continued from page 3

This year's Applefest also has the honor of hosting the 2014 Australasian Guild of Town Criers' Guild Championships with the main event taking place on Sunday when Town Criers from all over Australia will descend on Harcourt to compete for championship trophies.

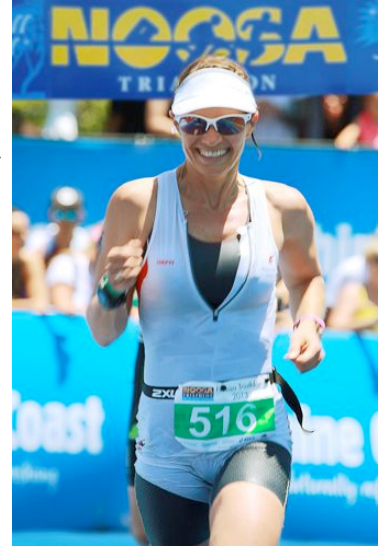
For more information visit the Applefest website at www.harcourtapplefest.org.au or follow the action on Facebook.

Shaz competes in Queensland triathlon

Back in November, Sharon Baker, owner of local business 'fit 'n' foxy' personal training, travelled to Noosa, Queensland to compete in her first Olympic distance triathlon.

This is the largest Triathlon in the Southern Hemisphere, with 8500 competitors.. Can you imagine the site of a football field jam packed with rows of bikes!

It was 27 degrees but the locals line the streets with hoses and sprinklers to cool you off on the last leg of the run. Sharon's splits were 35:46 for the 1.5K Swim, 1:22:09 for the 40K Bike ride and for the final leg, 50:32 for the 10K run with a total time of 2:50.



This was a lead up event for a longer Ironman Event later that month in Shepparton where she finished with a total time of 5:50.

Sharon is currently still competing with the Bendigo & Maryborough Triathlon Clubs. The Maryborough Triathlon Club have a Reverse Triathlon on Feb 9th and if anyone is interested in giving the sport a go, please feel free to contact her on shaz@fitnfoxpersonaltraing.com.au for more information.

Fire Ready

Continued from page 6

effect view the tankers making their way through a satellite image of the fire ground, sheds, dams and homes etc; all from hundreds of kilometres away!

Having just received back our repaired Tanker No.1, we have now had it removed and replaced once again. This time we are pleased to learn that it is to undergo a retrofit that will provide all the crew with enhanced protection. Many new features will be included such as reflective blinds for cabin, telescopic crew cabin on rear with drop down reflective shutter and installation of overhead sprinklers, plus much, much more! The tanker should be returned within a week, so drop in and check it out! Hopefully, our Community Tanker 2 will soon undergo a similar retrofit.

The general feeling amongst the CFA community is that the fire danger period will be protracted considerably this year, so the need for care continues. In closing, I would pass on the following observation/request from a crewmember. Fire tankers require a lot of area to manoeuvre in, so where possible please provide for suitable access.

Once again, thank you to all for your vigilance to date and may Guildford's summer continue to be a safe one.

Ray Pattle – Captain, Guildford RFB

Chapple's Cairn Curran Estate



Makers of award winning table wine.

Cellar Door, 329 Seers Rd, Welshmans Reef, 15 mins drive from Maldon.



Scan the Code to visit the Web site and Map or phone 5475 1039



Food + Entertainment

Guildford Family Hotel
Wed: Pizza Night
Thurs: Parma Night
Fri: Dinner Jam Session
Sat: Dinner Live Music
Sun: Lunch with live music
Folk Club Wed 19th February
www.guildfordfamilyhotel.com.au

V-line Bus

• Mon-Fri	• Saturday
Dep. Guildfd	Dep. Guildfd
06.30	9.25
07.20	18.45
10.25	Dep. Cas. Stn
15.05	10.00
16.20	19.20
Dep. Cas. Stn	• Sunday
07.25	Dep. Guildfd
13.00	18.15
20.10	Dep. Cas. Stn
	9.20

Organisation Meetings

Progress Association Meeting .
Monday 3rd March
Guildford Public Hall.
All welcome 7.00 pm.

John Powell Reserve
Committee of Management Monday
10th February .Pavilion
JP Reserve 7.00pm

Guildford Bus

Wednesdays
Maryborough 9.30
pickup General Store
Return 1.30
Thursdays
Castlemaine
10.15 pickup
Public Hall Return 1.30
No booking required
Fare \$5.00 ret \$3.00 o/w

Groups

Social Networks (Craft}
Saturday 1st March 10.30am
Public Hall.
And thereafter the first
Saturday of the month

Classes

Tai Chi for
Arthritis with Teresa
Fridays 10-11 in the
Hall Details: 5473 4180

Junior tennis 8-14
years Call Harvey on
5473 4345

The *Guildford Globe*

Published by: Guildford
Progress Association Inc.

Editor: Rajeev (Ian Oshlack)

Ph: 5473 4124 **Mob:** 0419991140

Email: guildfordglobe@hotmail.com

Web: www.guildfordglobe.com

Proofreading: Mary Soderiou

Advertising: Ph: 5473 4124

Post: Box 952, Guildford, 3451



Proudly supported by

Maldon & District

Community Bank® Branch



PHILIPSON MASONRY CONSTRUCTIONS

Glenn Philipson • 0407 825 293 • info@philipsonmasonry.com.au



• Stone Work • Brickwork • Paving • Excavations •

FOUR OUT OF FIVE

**BUSHFIRE DEATHS
HAPPEN CLOSE
TO HOME.**


Don't wait. Leave early. Pack your Emergency Kit so you're ready to go.
Listen to local radio and check the Fire Danger Rating so you know when to leave.
Stop making excuses.

LEAVE AND LIVE.

visit emergency.vic.gov.au

call **1800 240 667**

download the **FireReady** app

FireReady  Victoria